

MASSACHUSETTS BOARD OF HIGHER EDUCATION
2006 Final Release (February 2007)

Massachusetts
Community Colleges

**Key Performance
Indicators**
Linear Trends

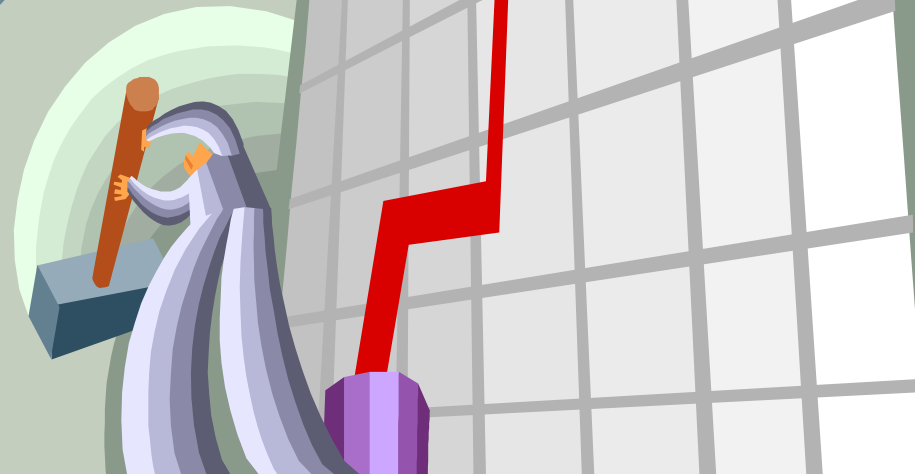


Table of Contents

I. Access and Affordability	
Annual Unduplicated Credit Headcount	1
Annual FTE Enrollment	2
Fall Unduplicated Credit Headcount	3
Fall FTE Enrollment	4
Tuition and Fees as Percent of State Median Family Income	5
Percent of Total Undergraduate Enrollment Comprised of Minorities	7
Financial Aid	8
II. Student Access and Success	
Annual Credit Course Completion Rate	10
Fall to Fall Persistence Rate	11
Fall to Spring Persistence Rate	13
Number of Annual Degrees and Certificates Awarded	15
Nursing Exam Pass Rate	17
III. Meet Regional Economic and Workforce Development Needs	
Annual Number of Not-for-Credit Workforce Development/Job Skills Training Courses Offered	19
Annual Enrollment in Not-for-Credit Workforce Development Courses	20

IV. Cost Effective Use of Resources	
Capital Adaptation and Renewal	21
Institutional Support Costs Compared to Peer Average	22
V. Fundraising	
Total Private Funds Received at Both the Institution and the Foundation	23
VI. Endnotes	24

Appendices

Appendix A:

Fall Unduplicated Credit Headcount
Total Degrees Conferred

Appendix B:

Tuition and Fees at Massachusetts Public Colleges and University

Appendix C:

Community College 80% Draw Communities
Regions of Massachusetts

Performance Accountability Objective: Access and Affordability

- Annual Unduplicated Credit Headcount
- Annual FTE Enrollment
- Fall Unduplicated Credit Headcount
- Fall FTE Enrollment
- Tuition and Fees as Percent of State Median Family Income
- Percent of Total Undergraduate Enrollment Comprised of Minorities
- Financial Aid

Annual Unduplicated Credit Headcount

	FY 1998	FY 1999	FY 2000	FY 2001	FY 2002	FY 2003	FY 2004	FY 2005	FY 2006
Berkshire*	3,238	3,449	3,475	3,378	3,310	3,202	3,139	3,127	3,115
Bristol	7,440	8,004	8,680	8,643	8,826	9,118	9,317	9,318	9,362
Bunker Hill	10,222	10,531	10,601	10,507	11,210	11,617	11,664	12,007	12,340
Cape Cod*	5,607	5,451	5,441	5,772	6,629	6,481	6,578	6,134	6,350
Greenfield	2,802	2,922	2,974	2,903	2,976	2,980	3,056	3,028	2,900
Holyoke	6,809	7,634	7,835	8,139	8,520	8,724	8,990	8,818	8,527
Massachusetts Bay	6,913	7,115	7,119	7,440	7,850	7,713	8,002	7,710	7,606
Massasoit	8,778	9,782	9,566	10,037	10,243	10,565	9,820	10,239	10,148
Middlesex	8,892	9,730	9,983	10,488	11,014	11,566	11,563	11,390	11,221
Mount Wachusett	4,139	4,359	4,803	4,809	5,347	5,399	5,774	5,570	5,587
North Shore*	7,851	8,336	8,930	9,112	8,944	8,924	9,171	9,338	9,683
Northern Essex	8,223	8,487	9,444	9,401	9,486	9,250	8,579	8,503	8,839
Quinsigamond*	7,239	7,713	8,258	8,848	9,722	9,914	9,429	8,558	8,385
Roxbury	3,530	4,392	3,306	3,969	4,005	3,694	3,489	3,200	3,379
Springfield Technical	8,938	9,032	8,826	9,360	9,445	9,051	8,914	8,612	8,246
Community College Total	100,621	106,937	109,241	112,806	117,527	118,198	117,485	115,552	115,688

Source (Pre-FY03): IPEDS Enrollment Survey

* See Endnotes Section

Source (FY03 and later): HEIRS Annual Student File

Annual FTE Enrollment

	FY 2000	FY 2001	FY 2002	FY 2003	FY 2004	FY 2005	FY 2006
Berkshire	1,413.0	1,465.5	1,397.9	1,365.5	1,372.1	1,398.1	1,365.0
Bristol	3,458.0	3,515.2	3,707.6	3,952.4	4,061.7	4,090.9	4,051.3
Bunker Hill	4,148.0	4,083.2	4,489.2	4,709.2	4,728.6	4,895.4	4,992.9
Cape Cod	2,116.0	2,274.7	2,312.7	2,327.8	2,419.1	2,321.3	2,458.0
Greenfield	1,417.0	1,383.2	1,436.0	1,399.7	1,415.2	1,427.0	1,357.7
Holyoke	3,450.0	3,498.7	3,809.5	4,049.0	4,224.5	4,192.4	4,055.1
Mass Bay*	3,151.0	3,246.0	3,685.2	3,615.3	3,586.7	3,483.2	3,422.2
Massasoit	3,999.0	4,129.8	4,284.7	4,415.0	4,101.9	4,360.3	4,319.9
Middlesex	4,126.0	4,289.4	4,681.0	5,022.8	5,000.7	4,927.9	4,899.1
Mount Wachusett*	1,952.0	1,952.3	2,273.4	2,341.3	2,411.2	2,401.7	2,498.2
North Shore**	3,737.0	3,836.7	3,886.0	3,905.5	4,054.2	4,150.6	4,277.0
Northern Essex	3,437.0	3,488.0	3,698.5	3,816.1	3,713.1	3,698.7	3,832.2
Quinsigamond**	3,486.0	3,665.1	4,015.2	4,321.1	4,217.0	3,938.9	3,848.8
Roxbury	1,727.0	1,891.6	1,844.1	1,720.0	1,551.9	1,435.3	1,513.9
Springfield Technical	3,910.0	4,036.8	3,961.4	4,106.3	4,113.6	4,062.8	3,921.8
Community College Total	45,527.0	46,756.4	49,482.5	51,067.0	50,971.5	50,784.4	50,813.1

Source (Pre-FY03): IPEDS Enrollment Survey

Source (FY03 and later): HEIRS Annual Student File

* FY 2001 data for Massachusetts Bay and Mount Wachusett Community Colleges were adjusted by the respective institutions using the correct methodology.

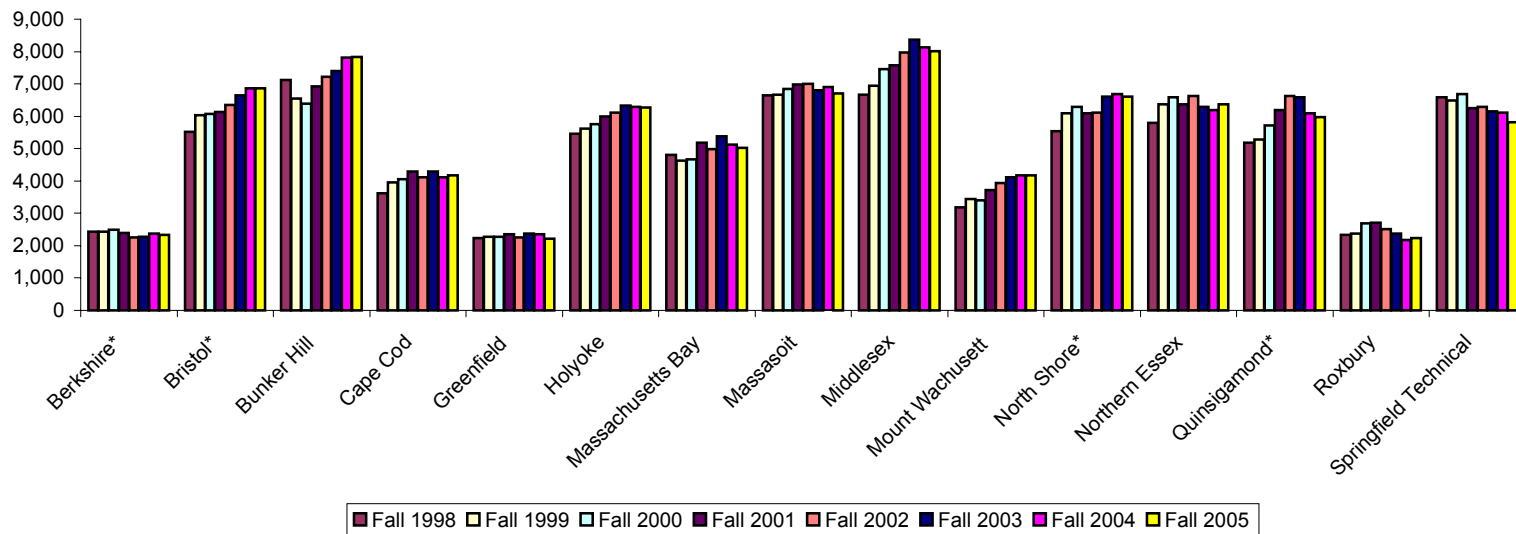
** See Endnotes Section

Fall Unduplicated Credit Headcount

	Fall 1998	Fall 1999	Fall 2000	Fall 2001	Fall 2002	Fall 2003	Fall 2004	Fall 2005
Berkshire*	2,439	2,431	2,494	2,401	2,254	2,272	2,364	2,328
Bristol*	5,518	6,033	6,067	6,124	6,346	6,639	6,864	6,873
Bunker Hill	7,129	6,543	6,386	6,914	7,211	7,397	7,821	7,837
Cape Cod	3,623	3,952	4,063	4,294	4,119	4,287	4,107	4,175
Greenfield	2,240	2,274	2,277	2,355	2,254	2,368	2,353	2,217
Holyoke	5,468	5,619	5,754	5,998	6,117	6,335	6,298	6,265
Massachusetts Bay	4,801	4,624	4,676	5,173	4,994	5,380	5,132	5,015
Massasoit	6,646	6,674	6,842	6,985	7,003	6,808	6,908	6,706
Middlesex	6,664	6,933	7,451	7,568	7,979	8,366	8,122	8,008
Mount Wachusett	3,194	3,446	3,397	3,711	3,946	4,118	4,165	4,170
North Shore*	5,529	6,101	6,285	6,100	6,106	6,612	6,690	6,604
Northern Essex	5,803	6,376	6,580	6,372	6,621	6,300	6,194	6,362
Quinsigamond*	5,178	5,279	5,713	6,183	6,621	6,592	6,100	5,969
Roxbury	2,334	2,382	2,699	2,712	2,515	2,365	2,180	2,236
Springfield Technical	6,590	6,497	6,694	6,257	6,282	6,157	6,114	5,823
Community College Total	73,156	75,164	77,378	79,147	80,368	81,996	81,412	80,588

Source: HEIRS Student File

* See Endnotes Section

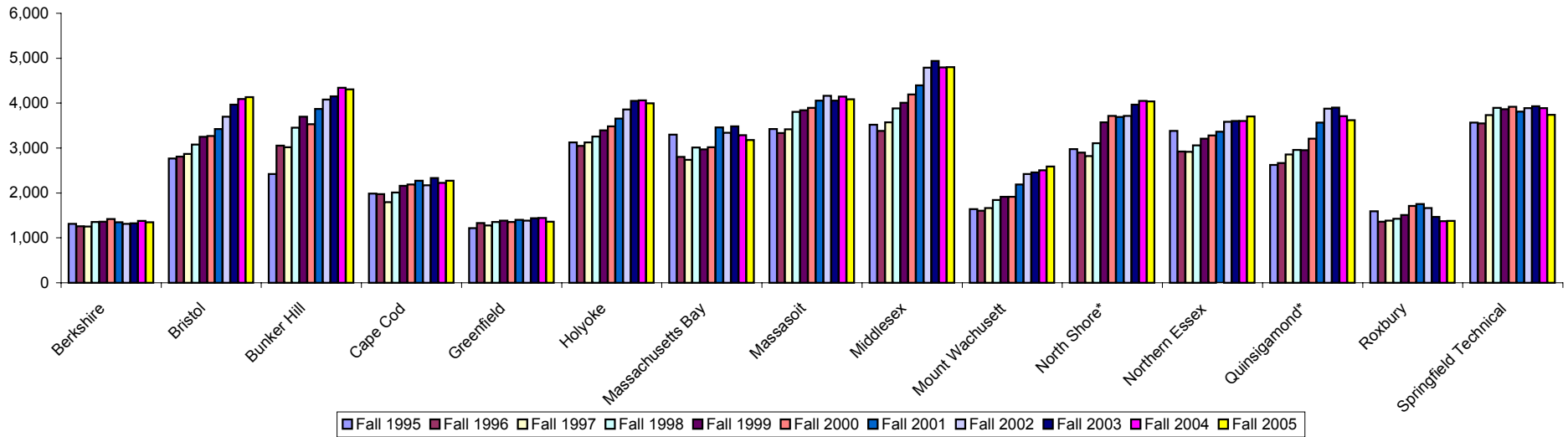


Fall FTE Enrollment

	Fall 1995	Fall 1996	Fall 1997	Fall 1998	Fall 1999	Fall 2000	Fall 2001	Fall 2002	Fall 2003	Fall 2004	Fall 2005
Berkshire	1,313.7	1,261.2	1,253.9	1,351.0	1,361.8	1,416.9	1,346.7	1,314.3	1,323.7	1,377.9	1,347.9
Bristol	2,766.7	2,810.9	2,867.1	3,075.9	3,249.2	3,268.7	3,423.5	3,697.1	3,964.7	4,093.7	4,136.1
Bunker Hill	2,421.2	3,054.9	3,015.6	3,455.5	3,697.8	3,529.9	3,872.2	4,078.6	4,148.9	4,341.0	4,305.9
Cape Cod	1,986.5	1,973.7	1,793.2	2,011.3	2,159.6	2,186.9	2,273.9	2,168.5	2,331.3	2,227.4	2,271.6
Greenfield	1,214.9	1,332.8	1,276.2	1,356.5	1,382.9	1,353.0	1,400.6	1,382.8	1,436.9	1,445.2	1,359.6
Holyoke	3,125.7	3,048.9	3,126.7	3,255.7	3,392.6	3,482.9	3,655.0	3,856.4	4,051.3	4,058.8	3,996.5
Massachusetts Bay	3,299.4	2,803.1	2,735.3	3,011.9	2,970.0	3,016.4	3,460.6	3,341.3	3,482.1	3,287.1	3,181.7
Massasoit	3,421.4	3,336.0	3,420.4	3,802.9	3,842.5	3,897.5	4,058.5	4,163.7	4,057.0	4,143.3	4,082.9
Middlesex	3,520.8	3,379.2	3,571.1	3,885.3	4,010.1	4,192.4	4,395.0	4,787.0	4,941.1	4,796.2	4,799.8
Mount Wachusett	1,641.2	1,602.5	1,666.5	1,842.2	1,917.1	1,914.5	2,188.7	2,420.3	2,456.5	2,505.5	2,586.2
North Shore*	2,974.8	2,897.9	2,820.4	3,106.5	3,574.7	3,715.7	3,691.9	3,716.3	3,965.8	4,049.2	4,040.4
Northern Essex	3,383.1	2,925.4	2,918.2	3,059.2	3,210.3	3,280.3	3,362.2	3,582.6	3,601.8	3,604.0	3,706.7
Quinsigamond*	2,623.2	2,665.9	2,856.2	2,956.9	2,953.3	3,208.7	3,565.5	3,874.8	3,901.5	3,708.0	3,622.5
Roxbury	1,594.6	1,360.1	1,384.0	1,423.5	1,506.6	1,713.0	1,756.3	1,663.2	1,464.3	1,369.1	1,374.8
Springfield Technical	3,567.0	3,548.1	3,736.2	3,895.5	3,865.0	3,920.9	3,809.5	3,889.3	3,933.2	3,887.9	3,742.3
Community College Total	69,468.0	66,966.0	38,441.0	41,489.8	43,093.5	44,097.7	46,260.1	47,936.2	49,060.1	48,894.3	48,555.0

Source: HEIRS Student File

* See Endnote Section



Tuition and Fees* as Percent of State Median Family Income

		FY 2001	FY 2002	FY 2003	FY 2004	FY 2005	FY 2006
Berkshire	Tuition and Fees	\$2,490	\$2,700	\$3,090	\$3,390	\$3,390	\$3,600
	Median Family Income	\$61,664	\$65,391	\$66,922	\$67,527	\$68,701	\$71,655
	Tuition and Fees as a Percent of Median Income	4.0%	4.1%	4.6%	5.0%	4.9%	5.0%
Bristol	Tuition and Fees	\$2,070	\$2,160	\$2,820	\$3,060	\$3,240	\$3,750
	Median Family Income	\$61,664	\$65,391	\$66,922	\$67,527	\$68,701	\$71,655
	Tuition and Fees as a Percent of Median Income	3.4%	3.3%	4.2%	4.5%	4.7%	5.2%
Bunker Hill	Tuition and Fees	\$1,950	\$1,950	\$2,400	\$3,000	\$3,000	\$3,000
	Median Family Income	\$61,664	\$65,391	\$66,922	\$67,527	\$68,701	\$71,655
	Tuition and Fees as a Percent of Median Income	3.2%	3.0%	3.6%	4.4%	4.4%	4.2%
Cape Cod	Tuition and Fees	\$2,310	\$2,460	\$3,180	\$3,180	\$3,660	\$3,660
	Median Family Income	\$61,664	\$65,391	\$66,922	\$67,527	\$68,701	\$71,655
	Tuition and Fees as a Percent of Median Income	3.7%	3.8%	4.8%	4.7%	5.3%	5.1%
Greenfield	Tuition and Fees	\$2,297	\$2,507	\$3,017	\$3,317	\$3,647	\$3,982
	Median Family Income	\$61,664	\$65,391	\$66,922	\$67,527	\$68,701	\$71,655
	Tuition and Fees as a Percent of Median Income	3.7%	3.8%	4.5%	4.9%	5.3%	5.6%
Holyoke	Tuition and Fees	\$2,176	\$2,436	\$2,796	\$3,096	\$3,098	\$3,188
	Median Family Income	\$61,664	\$65,391	\$66,922	\$67,527	\$68,701	\$71,655
	Tuition and Fees as a Percent of Median Income	3.5%	3.7%	4.2%	4.6%	4.5%	4.4%
Mass Bay	Tuition and Fees	\$1,890	\$1,960	\$2,870	\$3,170	\$3,650	\$3,650
	Median Family Income	\$61,664	\$65,391	\$66,922	\$67,527	\$68,701	\$71,655
	Tuition and Fees as a Percent of Median Income	3.1%	3.0%	4.3%	4.7%	5.3%	5.1%
Massasoit	Tuition and Fees	\$2,040	\$2,040	\$2,640	\$3,330	\$3,330	\$3,300
	Median Family Income	\$61,664	\$65,391	\$66,922	\$67,527	\$68,701	\$71,655
	Tuition and Fees as a Percent of Median Income	3.3%	3.1%	3.9%	4.9%	4.8%	4.6%
Middlesex	Tuition and Fees	\$2,360	\$2,510	\$3,020	\$3,380	\$3,650	\$3,650
	Median Family Income	\$61,664	\$65,391	\$66,922	\$67,527	\$68,701	\$71,655
	Tuition and Fees as a Percent of Median Income	3.8%	3.8%	4.5%	5.0%	5.3%	5.1%

Tuition and Fees* as Percent of State Median Family Income

		FY 2001	FY 2002	FY 2003	FY 2004	FY 2005	FY 2006
Mount Wachusett	Tuition and Fees	\$2,570	\$2,690	\$3,410	\$4,010	\$4,010	\$3,970
	Median Family Income	\$61,664	\$65,391	\$66,922	\$67,527	\$68,701	\$71,655
	Tuition and Fees as a Percent of Median Income	4.2%	4.1%	5.1%	5.9%	5.8%	5.5%
North Shore	Tuition and Fees	\$2,190	\$2,490	\$3,090	\$3,390	\$3,390	\$3,480
	Median Family Income	\$61,664	\$65,391	\$66,922	\$67,527	\$68,701	\$71,655
	Tuition and Fees as a Percent of Median Income	3.6%	3.8%	4.6%	5.0%	4.9%	4.9%
Northern Essex	Tuition and Fees	\$2,190	\$2,280	\$2,670	\$2,970	\$2,970	\$3,150
	Median Family Income	\$61,664	\$65,391	\$66,922	\$67,527	\$68,701	\$71,655
	Tuition and Fees as a Percent of Median Income	3.6%	3.5%	4.0%	4.4%	4.3%	4.4%
Quinsigamond	Tuition and Fees	\$1,890	\$1,890	\$2,730	\$3,600	\$3,600	\$3,600
	Median Family Income	\$61,664	\$65,391	\$66,922	\$67,527	\$68,701	\$71,655
	Tuition and Fees as a Percent of Median Income	3.1%	2.9%	4.1%	5.3%	5.2%	5.0%
Roxbury	Tuition and Fees	\$2,100	\$2,100	\$2,450	\$3,250	\$3,460	\$3,460
	Median Family Income	\$61,664	\$65,391	\$66,922	\$67,527	\$68,701	\$71,655
	Tuition and Fees as a Percent of Median Income	3.4%	3.2%	3.7%	4.8%	5.0%	4.8%
Springfield Technical	Tuition and Fees	\$2,184	\$2,434	\$2,734	\$3,144	\$3,204	\$3,354
	Median Family Income	\$61,664	\$65,391	\$66,922	\$67,527	\$68,701	\$71,655
	Tuition and Fees as a Percent of Median Income	3.5%	3.7%	4.1%	4.7%	4.7%	4.7%
Community College Average	Tuition and Fees	\$2,153	\$2,273	\$2,831	\$3,265	\$3,380	\$3,477
	Median Family Income	\$61,664	\$65,391	\$66,922	\$67,527	\$68,701	\$71,655
	Tuition and Fees as a Percent of Median Income	3.5%	3.5%	4.2%	4.8%	4.9%	4.9%
Northeastern States Average **	Tuition and Fees					\$2,971	\$3,063
	Median Family Income					\$62,052	\$64,147
	Tuition and Fees as a Percent of Median Income					4.8%	4.8%

Source: BHE Tuition and Fee Survey; US Census; American Community Survey

Note: Median Family Income lags tuition and fees by one fiscal year (i.e. income earned in FY 2003 is used to pay tuition and fees in FY 2004).

* Annual Tuition and Fees derived from fall rates; Community College Average Tuition and Fees are calculated as a weighted average based on FTE.

** Northeastern States Average calculated from IPEDS, using New England and Mideast states in Carnegie Classification 40: Associates Colleges

Percent of Total Undergraduate Enrollment Comprised of Minorities

	80% Draw Communities 18 and Over Minority Population		Fall-1998 Enrollment		Fall-1999 Enrollment		Fall-2000 Enrollment		Fall-2001 Enrollment		Fall-2002 Enrollment		Fall-2003 Enrollment		Fall-2004 Enrollment		Fall-2005 Enrollment	
	%	#	% of known Ethnicity		% of known Ethnicity		% of known Ethnicity		% of known Ethnicity		% of known Ethnicity		% of known Ethnicity		% of known Ethnicity		% of known Ethnicity	
			#	%	#	%	#	%	#	%	#	%	#	%	#	%	#	%
Berkshire	5.1%	69	4.3%	129	5.8%	141	6.0%	155	6.9%	176	8.3%	209	9.7%	218	9.7%	215	9.8%	
Bristol	10.5%	405	7.7%	489	8.5%	454	8.0%	533	9.3%	622	10.5%	660	10.8%	724	11.6%	782	12.6%	
Bunker Hill	35.8%	3,496	55.1%	3,725	61.5%	2,992	58.9%	3,631	59.3%	3,626	58.7%	3,866	58.5%	4,420	59.9%	4,341	59.9%	
Cape Cod	5.8%	193	5.6%	219	5.9%	213	5.8%	240	6.2%	260	7.1%	319	8.5%	411	11.3%	461	12.4%	
Greenfield	10.0%	116	6.9%	132	7.2%	144	7.6%	167	8.7%	159	8.2%	197	9.2%	196	9.1%	181	8.9%	
Holyoke	21.8%	798	16.2%	809	16.5%	864	17.8%	1,049	19.0%	1,155	20.1%	1,321	21.8%	1,373	22.8%	1,405	23.2%	
Mass Bay	27.3%	1,051	24.0%	1,035	25.3%	1,144	28.2%	1,297	29.0%	1,239	27.3%	1,215	24.3%	1,071	22.1%	1,144	24.0%	
Massasoit	27.8%	844	16.2%	980	17.9%	1,092	19.8%	1,116	20.8%	1,316	22.7%	1,372	23.3%	1,467	23.4%	1,340	21.9%	
Middlesex	17.3%	1,063	16.5%	1,184	17.8%	1,392	19.5%	1,579	21.8%	1,840	23.8%	1,916	23.9%	1,904	24.2%	1,946	24.8%	
Mount Wachusett	10.7%	339	11.4%	356	11.6%	396	12.9%	457	13.9%	392	11.9%	567	16.3%	585	15.9%	635	16.5%	
North Shore	30.3%	983	18.2%	1,067	18.1%	1,217	19.9%	1,252	21.3%	1,306	22.5%	1,490	23.8%	1,437	22.7%	1,542	24.9%	
Northern Essex	21.7%	1,163	24.1%	1,433	24.7%	1,643	26.8%	1,674	28.3%	1,783	28.8%	1,699	28.5%	1,712	29.5%	1,592	27.1%	
Quinsigamond	13.9%	807	17.5%	902	18.8%	1,067	21.0%	1,296	23.4%	1,443	24.2%	1,506	24.9%	1,378	24.1%	1,283	22.8%	
Roxbury	44.6%	1,733	91.4%	1,527	88.0%	1,628	91.2%	1,731	87.3%	1,583	89.3%	1,489	89.5%	1,486	92.3%	1,529	92.7%	
STCC	23.9%	1,307	23.5%	1,299	24.3%	1,273	25.1%	1,138	25.9%	1,735	29.4%	1,810	30.6%	1,856	32.6%	1,863	34.7%	
Community Colleges	16.1%	14,367	22.2%	15,286	22.7%	15,660	23.2%	17,315	24.9%	18,635	25.7%	19,636	26.2%	20,238	26.8%	20,259	27.1%	

Source: HEIRS Student File; US Census

*Note: Enrollment data not included for unknown or non-resident alien students. Minority population is based on all individuals 18 and over that reported a race or ethnicity other than "White, Non-Hispanic" for the 2000 Census. Institutional 80% draw communities are listed in Appendix C.

Annual Financial Aid
Students whose need was met by all forms of aid

Inclusion of this indicator in this year's Performance Measurement report is to be determined, pending further Board discussion

	FY 2005	FY 2006
Institution Name	% Met Need	% Met Need
Berkshire Community College	89.9%	99.0%
Bristol Community College	90.8%	84.2%
Bunker Hill Community College	97.3%	96.2%
Cape Cod Community College	94.0%	91.8%
Greenfield Community College	93.2%	89.5%
Holyoke Community College	95.9%	97.4%
Mass Bay Community College	78.8%	73.9%
Massasoit Community College	82.2%	94.9%
Middlesex Community College	92.2%	84.4%
Mt. Wachusett Community College	85.0%	91.3%
North Shore Community College	96.5%	96.7%
Northern Essex Community College	97.6%	98.7%
Quinsigamond Community College	90.8%	87.9%
Roxbury Community College	77.2%	71.7%
Springfield Technical Community College	93.8%	97.5%
Community Colleges	91.2%	92.2%

Source: BHE Annual Financial Aid File

Percent of Aid-Eligible Students who had their Need (Direct Costs – Expected Family Contribution) met by financial aid (including loans)

The target for this measure is that at least 85% of eligible students receive aid to meet direct costs

Direct Costs = mandatory tuition and fees + insurance + books & supplies

Performance Accountability Objective: Student Access and Success

- Annual Credit Course Completion Rate
- Fall to Fall Persistence Rate
- Fall to Spring Persistence Rate
- Number of Annual Degrees and Certificates Awarded
- Nursing Exam Pass Rate

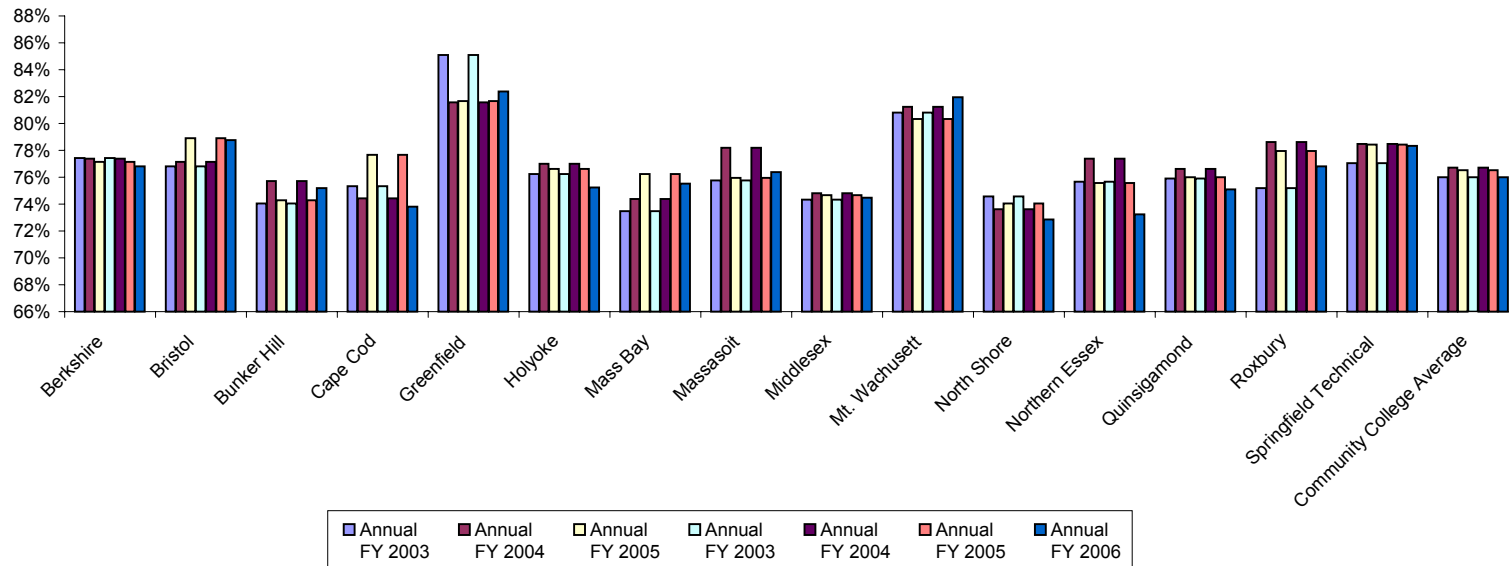
Annual Credit Course Completion Rate

	Fall 1997	Fall 1998	Fall 1999	Fall 2000	Fall 2001	Fall 2002
Berkshire	74%	76%	79%	77%	77%	77%
Bristol	77%	77%	76%	78%	79%	79%
Bunker Hill	70%	81%	69%	70%	76%	72%
Cape Cod	87%	79%	80%	78%	80%	81%
Greenfield	79%	78%	79%	76%	76%	79%
Holyoke	76%	75%	77%	73%	74%	76%
Mass Bay	67%	69%	70%	70%	73%	72%
Massasoit	75%	75%	76%	76%	74%	77%
Middlesex	72%	74%	76%	76%	75%	74%
Mt. Wachusett	79%	78%	78%	79%	79%	81%
North Shore	76%	73%	76%	75%	75%	75%
Northern Essex	82%	83%	80%	75%	75%	76%
Quinsigamond	73%	80%	74%	74%	74%	75%
Roxbury	62%	71%	76%	57%	81%	74%
Springfield Technical	81%	80%	77%	79%	76%	77%
Community College Average	75%	77%	76%	74%	76%	76%

Source (Pre-FY03): Campus Data provided by the Community College Executive Office

Annual FY 2003	Annual FY 2004	Annual FY 2005	Annual FY 2006
77%	77%	77%	77%
77%	77%	79%	79%
74%	76%	74%	75%
75%	74%	78%	74%
85%	82%	82%	82%
76%	77%	77%	75%
73%	74%	76%	76%
76%	78%	76%	76%
74%	75%	75%	74%
81%	81%	80%	82%
75%	74%	74%	73%
76%	77%	76%	73%
76%	77%	76%	75%
75%	79%	78%	77%
77%	78%	78%	78%
76%	77%	77%	76%

Source (FY03 and later): HEIRS Annual Course and Course Enrollment Files



**First-Year Retention Rate (Fall-to-Fall)
New First-Time, Full-Time Degree-Seeking Students**

			Fall-2000 Cohort	Fall-2001 Cohort	Fall-2002 Cohort	Fall-2003 Cohort	Fall-2004 Cohort
Community College	Berkshire Community College	Full-time First-time Degree-Seeking Students*	297	309	308	295	306
		# Returning to Same Institution	167	178	196	181	182
		% Returning to Same Institution	56.2%	57.6%	63.6%	61.4%	59.5%
	Bristol Community College	Full-time First-time Degree-Seeking Students*	829	883	857	993	1245
		# Returning to Same Institution	523	591	557	616	759
		% Returning to Same Institution	63.1%	66.9%	65.0%	62.0%	61.0%
	Bunker Hill Community College	Full-time First-time Degree-Seeking Students*	786	821	722	680	781
		# Returning to Same Institution	382	445	375	342	389
		% Returning to Same Institution	48.6%	54.2%	51.9%	50.3%	49.8%
	Cape Cod Community College	Full-time First-time Degree-Seeking Students*	465	442	369	519	420
		# Returning to Same Institution	241	227	201	288	240
		% Returning to Same Institution	51.8%	51.4%	54.5%	55.5%	57.1%
	Greenfield Community College	Full-time First-time Degree-Seeking Students*	274	266	262	244	281
		# Returning to Same Institution	163	143	152	144	165
		% Returning to Same Institution	59.5%	53.8%	58.0%	59.0%	58.7%
	Holyoke Community College	Full-time First-time Degree-Seeking Students*	983	1,000	1,140	1,123	1,120
		# Returning to Same Institution	574	561	685	680	647
		% Returning to Same Institution	58.4%	56.1%	60.1%	60.6%	57.8%
	Mass Bay Community College	Full-time First-time Degree-Seeking Students*	784	999	864	923	819
		# Returning to Same Institution	410	472	452	461	423
		% Returning to Same Institution	52.3%	47.2%	52.3%	49.9%	51.6%
Massasoit Community College	Full-time First-time Degree-Seeking Students*	1,044	1,087	1,157	1,144	1,326	
	# Returning to Same Institution	608	630	686	629	759	
	% Returning to Same Institution	58.2%	58.0%	59.3%	55.0%	57.2%	
Middlesex Community College	Full-time First-time Degree-Seeking Students*	1,179	1,212	1,454	1,266	1,246	
	# Returning to Same Institution	641	649	788	685	681	
	% Returning to Same Institution	54.4%	53.5%	54.2%	54.1%	54.7%	
Mt. Wachusett Community College*	Full-time First-time Degree-Seeking Students*	569	786	1,187	611	683	
	# Returning to Same Institution	302	385	609	308	327	
	% Returning to Same Institution	53.1%	49.0%	51.3%	50.4%	47.9%	

**First-Year Retention Rate (Fall-to-Fall)
New First-Time, Full-Time Degree-Seeking Students**

			Fall-2000 Cohort	Fall-2001 Cohort	Fall-2002 Cohort	Fall-2003 Cohort	Fall-2004 Cohort
Community College	North Shore Community College	Full-time First-time Degree-Seeking Students*	826	693	771	818	939
		# Returning to Same Institution	468	399	471	467	561
		% Returning to Same Institution	56.7%	57.6%	61.1%	57.1%	59.7%
	Northern Essex Community College	Full-time First-time Degree-Seeking Students*	910	644	692	622	626
		# Returning to Same Institution	559	357	389	352	374
		% Returning to Same Institution	61.4%	55.4%	56.2%	56.6%	59.7%
	Quinsigamond Community College	Full-time First-time Degree-Seeking Students*	652	881	895	857	813
		# Returning to Same Institution	399	527	563	479	432
		% Returning to Same Institution	61.2%	59.8%	62.9%	55.9%	53.1%
	Roxbury Community College	Full-time First-time Degree-Seeking Students*	417	465	382	300	332
		# Returning to Same Institution	222	233	160	139	145
		% Returning to Same Institution	53.2%	50.1%	41.9%	46.3%	43.7%
	Springfield Technical Community College	Full-time First-time Degree-Seeking Students*	1,100	1,086	812	791	783
		# Returning to Same Institution	616	666	488	452	442
		% Returning to Same Institution	56.0%	61.3%	60.1%	57.1%	56.4%
	Community Colleges	Full-time First-time Degree-Seeking Students*	11,115	11,574	11,872	11,186	11,720
		# Returning to Same Institution	6,275	6,463	6,772	6,223	6,526
		% Returning to Same Institution	56.5%	55.8%	57.0%	55.6%	55.7%

*See Endnotes Section

* **Note:** Cohort Identification: HEIRS II Fall Term Credit Student Unit Record File. **Data Elements:** *Student Type at Current Registration* = New; *New Student Type* = Degree-Seeking First-time freshman; *Full-Time* = Enrolled 12+ credits; Cohort is adjusted to eliminate students from the initial cohort who graduate prior to the next fall term (if any) and would not be expected to return; *# Returning* is derived from matching Student SSN and Student ID in the following fall term HEIRS II Student file; *% Returning* = # Returning/Full-time First-time Degree-Seeking Students

Fall to Spring Persistence Rate

Please Note: The Fall-to-Spring rate differs from the Fall-to-Fall persistence rates in that it is based on the fall cohort of students returning to the institution in the spring who initially enroll as degree-seeking, are not enrolled in ESL coursework in the fall, earn 9 or more credits in the fall, and haven't graduated prior to the spring term.

Enrollment Status		Fall 2002 Cohort	Fall 2003 Cohort	Fall 2004 Cohort	Fall 2005 Cohort
Berkshire Community College	Total Cohort	315	291	297	263
	# Returning to Same Institution at Spring	294	261	274	239
	% Returning to Same Institution at Spring	93.3%	89.7%	92.3%	90.9%
Bristol Community College	Total Cohort	711	883	1,089	906
	# Returning to Same Institution at Spring	675	825	1,002	846
	% Returning to Same Institution at Spring	94.9%	93.4%	92.0%	93.4%
Bunker Hill Community College	Total Cohort	509	631	680	706
	# Returning to Same Institution at Spring	461	572	617	641
	% Returning to Same Institution at Spring	90.6%	90.6%	90.7%	90.8%
Cape Cod Community College	Total Cohort	295	449	393	404
	# Returning to Same Institution at Spring	262	406	348	365
	% Returning to Same Institution at Spring	88.8%	90.4%	88.5%	90.3%
Greenfield Community College	Total Cohort	326	331	355	226
	# Returning to Same Institution at Spring	288	299	323	202
	% Returning to Same Institution at Spring	88.3%	90.3%	91.0%	89.4%
Holyoke Community College	Total Cohort	1,024	1,008	760	731
	# Returning to Same Institution at Spring	947	933	697	669
	% Returning to Same Institution at Spring	92.5%	92.6%	91.7%	91.5%
Mass Bay Community College	Total Cohort	743	768	746	694
	# Returning to Same Institution at Spring	653	686	663	627
	% Returning to Same Institution at Spring	87.9%	89.3%	88.9%	90.3%
Massasoit Community College	Total Cohort	1,118	1,042	1,274	979
	# Returning to Same Institution at Spring	1,028	937	1,171	906
	% Returning to Same Institution at Spring	91.9%	89.9%	91.9%	92.5%
Middlesex Community College	Total Cohort	1,455	1,265	1,170	1,187
	# Returning to Same Institution at Spring	1,318	1,136	1,073	1,076
	% Returning to Same Institution at Spring	90.6%	89.8%	91.7%	90.6%
Mt. Wachusett Community College	Total Cohort	1,183	560	579	605
	# Returning to Same Institution at Spring	1,030	480	510	522
	% Returning to Same Institution at Spring	87.1%	85.7%	88.1%	86.3%

Fall to Spring Persistence Rate

Please Note: The Fall-to-Spring rate differs from the Fall-to-Fall persistence rates in that it is based on the fall cohort of students returning to the institution in the spring who initially enroll as degree-seeking, are not enrolled in ESL coursework in the fall, earn 9 or more credits in the fall, and haven't graduated prior to the spring term.

Enrollment Status		Fall 2002 Cohort	Fall 2003 Cohort	Fall 2004 Cohort	Fall 2005 Cohort
North Shore Community College	Total Cohort	855	882	1,002	897
	# Returning to Same Institution at Spring	766	797	901	820
	% Returning to Same Institution at Spring	89.6%	90.4%	89.9%	91.4%
Northern Essex Community College	Total Cohort	560	485	455	555
	# Returning to Same Institution at Spring	508	445	428	510
	% Returning to Same Institution at Spring	90.7%	91.8%	94.1%	91.9%
Quinsigamond Community College	Total Cohort	826	762	721	793
	# Returning to Same Institution at Spring	779	703	662	708
	% Returning to Same Institution at Spring	94.3%	92.3%	91.8%	89.3%
Roxbury Community College	Total Cohort	268	258	218	261
	# Returning to Same Institution at Spring	239	211	185	222
	% Returning to Same Institution at Spring	89.2%	81.8%	84.9%	85.1%
Springfield Technical Community College	Total Cohort	833	827	859	902
	# Returning to Same Institution at Spring	775	751	790	824
	% Returning to Same Institution at Spring	93.0%	90.8%	92.0%	91.4%
Community Colleges	Total Cohort	11,021	10,442	10,598	10,109
	# Returning to Same Institution at Spring	10,023	9,442	9,644	9,177
	% Returning to Same Institution at Spring	90.9%	90.4%	91.0%	90.8%

Source: HEIRS Fall Enrollment and Annual Enrollment Files

Number of Annual Degrees and Certificates Awarded

	Degree Level	FY 1995	FY 1996	FY 1997	FY 1998	FY 1999	FY 2000	FY 2001	FY 2002	FY 2003	FY 2004	FY 2005	FY 2006
Berkshire	Certificate	67	43	37	53	60	73	64	82	67	79	48	67
	Associate	227	259	252	257	243	247	241	275	225	270	273	253
	Total	294	302	289	310	303	320	305	357	292	349	321	320
Bristol*	Certificate	12	28	75	120	127	129	149	177	184	169	191	253
	Associate	577	481	562	567	628	528	606	613	650	674	745	754
	Total	589	509	637	687	755	657	755	790	834	843	936	1,007
Bunker Hill	Certificate	121	143	167	153	130	148	140	121	162	170	174	179
	Associate	356	333	349	362	339	361	347	282	440	515	505	507
	Total	477	476	516	515	469	509	487	403	602	685	679	686
Cape Cod*	Certificate	166	61	105	158	177	114	127	96	66	109	85	103
	Associate	304	352	333	306	272	281	307	325	305	316	345	385
	Total	470	413	438	464	449	395	434	421	371	425	430	488
Greenfield	Certificate	119	87	95	91	117	103	123	104	95	114	93	85
	Associate	320	272	267	268	255	302	293	279	275	257	262	270
	Total	439	359	362	359	372	405	416	383	370	371	355	355
Holyoke	Certificate	31	44	37	35	58	46	76	100	140	171	196	157
	Associate	642	646	586	628	618	672	625	645	723	747	791	724
	Total	673	690	623	663	676	718	701	745	863	918	987	881
Mass Bay	Certificate	134	112	144	151	127	183	195	125	160	196	287	245
	Associate	390	455	455	413	437	465	399	405	350	435	417	411
	Total	524	567	599	564	564	648	594	530	510	631	704	656
Massasoit*	Certificate	55	45	55	40	36	30	29	48	37	103	112	169
	Associate	736	760	706	710	644	700	672	660	632	643	635	732
	Total	791	805	761	750	680	730	701	708	669	746	747	901
Middlesex	Certificate	137	209	209	199	172	176	170	126	137	181	136	137
	Associate	744	798	667	634	588	598	703	716	751	911	867	867
	Total	881	1007	876	833	760	774	873	842	888	1,092	1,003	1,004
Mt. Wachusett	Certificate	143	137	142	133	125	97	139	102	113	160	202	210
	Associate	536	373	409	383	415	393	385	379	381	387	442	455
	Total	679	510	551	516	540	490	524	481	494	547	644	665
North Shore	Certificate	234	164	145	158	146	216	246	191	179	200	230	236
	Associate	702	613	549	580	522	574	543	534	478	511	559	603
	Total	936	777	694	738	668	790	789	725	657	711	789	839

Number of Annual Degrees and Certificates Awarded

	Degree Level	FY 1995	FY 1996	FY 1997	FY 1998	FY 1999	FY 2000	FY 2001	FY 2002	FY 2003	FY 2004	FY 2005	FY 2006
Northern Essex	Certificate	258	242	214	204	220	182	184	263	245	242	224	251
	Associate	540	543	531	478	459	404	423	483	526	523	615	575
	Total	798	785	745	682	679	586	607	746	771	765	839	826
Quinsigamond	Certificate	143	135	136	160	116	126	162	173	178	182	147	144
	Associate	585	560	551	518	503	528	500	497	531	548	579	603
	Total	728	695	687	678	619	654	662	670	709	730	726	747
Roxbury	Certificate	2	0	32	22	16	7	5	23	23	51	39	31
	Associate	15	100	135	157	111	124	171	190	153	192	190	165
	Total	17	100	167	179	127	131	176	213	176	243	229	196
Springfield Technical	Certificate	48	41	42	164	193	135	132	147	146	155	145	155
	Associate	685	732	703	688	727	736	743	656	727	716	765	720
	Total	733	773	745	852	920	871	875	803	873	871	910	875
Community College Total	Certificate	1,670	1,491	1,635	1,841	1,820	1,765	1,941	1,878	1,932	2,282	2,309	2,422
	Associate	7,359	7,277	7,055	6,949	6,761	6,913	6,958	6,939	7,147	7,645	7,990	8,024
	Total	9,029	8,768	8,690	8,790	8,581	8,678	8,899	8,817	9,079	9,927	10,299	10,446

Source: HEIRS Degrees File

Note: Degrees conferred data in HEIRS was cleaned in 2005/2006 to remove occurrences of duplicate degrees reported in multiple years. Because of this process, some institutions' data is slightly different for earlier years.

*See Endnotes Section

Nursing Exam Pass Rate (RN exam only)

	First-time Test Takers	1998	1999	2000	2001	2002	2003	2004*	2005
Berkshire	# examined	38	37	33	34	49	29	40	49
	# passing	34	34	28	27	47	27	30	49
	pass rate	89.5%	91.9%	84.8%	79.4%	95.9%	93.1%	75.0%	100.0%
Bristol	# examined	52	63	43	35	42	45	60	75
	# passing	50	59	41	34	42	45	52	66
	pass rate	96.2%	93.7%	95.3%	97.1%	100.0%	100.0%	86.7%	88.0%
Bunker Hill	# examined	40	47	41	36	29	34	34	47
	# passing	29	33	25	30	27	32	28	41
	pass rate	72.5%	70.2%	61.0%	83.3%	93.1%	94.1%	82.4%	87.2%
Cape Cod	# examined	62	63	58	49	50	59	82	72
	# passing	58	54	42	44	45	50	68	61
	pass rate	93.5%	85.7%	72.4%	89.8%	90.0%	84.7%	82.9%	84.7%
Greenfield	# examined	40	35	32	34	24	31	33	36
	# passing	33	32	29	27	24	30	30	32
	pass rate	82.5%	91.4%	90.6%	79.4%	100.0%	96.8%	90.9%	88.9%
Holyoke	# examined	33	40	27	37	32	49	45	46
	# passing	30	36	20	32	24	40	37	44
	pass rate	90.9%	90.0%	74.1%	86.5%	75.0%	81.6%	82.2%	95.7%
Mass Bay	# examined	104	93	87	74	88	104	108	99
	# passing	82	79	76	68	80	86	92	86
	pass rate	78.8%	84.9%	87.4%	91.9%	90.9%	82.7%	85.2%	86.9%
Massasoit	# examined	59	53	54	58	53	54	56	59
	# passing	47	45	46	41	46	50	49	59
	pass rate	79.7%	84.9%	85.2%	70.7%	86.8%	92.6%	87.5%	100.0%
Middlesex	# examined	46	37	42	27	42	37	53	47
	# passing	40	32	37	23	38	33	46	39
	pass rate	87.0%	86.5%	88.1%	85.2%	90.5%	89.2%	86.8%	83.0%
Mt. Wachusett	# examined	53	41	36	38	53	56	74	82
	# passing	50	40	28	38	52	50	63	70
	pass rate	94.3%	97.6%	77.8%	100.0%	98.1%	89.3%	85.1%	85.4%
North Shore	# examined	57	50	50	52	55	55	57	53
	# passing	50	44	44	44	48	48	55	47
	pass rate	87.7%	88.0%	88.0%	84.6%	87.3%	87.3%	96.5%	88.7%
Northern Essex	# examined	114	77	79	54	57	51	59	79
	# passing	100	63	72	47	48	48	50	60
	pass rate	87.7%	81.8%	91.1%	87.0%	84.2%	94.1%	84.7%	75.9%

Nursing Exam Pass Rate (RN exam only)

	First-time Test Takers	1998	1999	2000	2001	2002	2003	2004*	2005
Quinsigamond	# examined	63	49	59	49	61	59	64	88
	# passing	63	48	59	49	59	54	55	74
	pass rate	100.0%	98.0%	100.0%	100.0%	96.7%	91.5%	85.9%	84.1%
Roxbury	# examined	20	26	21	20	24	25	27	42
	# passing	17	19	15	16	19	22	15	31
	pass rate	85.0%	73.1%	71.4%	80.0%	79.2%	88.0%	55.6%	73.8%
Springfield Technical	# examined	57	50	57	47	35	41	61	83
	# passing	54	46	46	39	29	34	49	65
	pass rate	94.7%	92.0%	80.7%	83.0%	82.9%	82.9%	80.3%	78.3%
Community College Total	# examined	838	761	719	644	694	729	853	957
	# passing	737	664	608	559	628	649	719	824
	pass rate	88%	87%	85%	87%	90%	89%	84%	86%
State RN pass rate at Associate Level (first time)		86%	85%	84%	85%	87%	88%	86%	86%
National RN Pass Rate at Associate Level (first time)		85%	85%	84%	86%	87%	87%	85%	87%

Source: Massachusetts Board of Registration in Nursing, National Council of State Boards of Nursing

Note: Passing the National Council Licensure Exam (NCLEX) is required to become a registered nurse. The BHE measures pass rates on this exam for first-time test-takers as an indication of academic quality and learning outcomes (the inclusion of repeat test takers would increase the annual pass rate).

*A higher passing standard was instituted in 2004 for this exam. As a result, the average pass rates for Massachusetts community colleges fell slightly from 2003.

Performance Accountability Objective: Meet Regional Economic and Workforce Development Needs

- ❑ Annual Number of Not-for-Credit Workforce Development/Job Skills Courses Offered
- ❑ Annual Enrollment in Not-for-Credit Workforce Development Courses

Annual Number of Not-for-Credit Workforce Development/Job Skills Training Courses

	FY 2000	FY 2001	FY 2002	FY 2003	FY 2004	FY 2005	FY 2006
Berkshire	153	160	151	242	270	277	286
Bristol	312	629	728	568	659	706	825
Bunker Hill	124	215	249	214	277	214	224
Cape Cod	98	137	110	139	134	135	171
Greenfield	184	167	149	214	290	315	316
Holyoke	282	227	448	413	336	249	296
Mass Bay**	317	362	333	323	179	277	258
Massasoit	330	325	341	246	249	382	357
Middlesex*	694	932	2,004	2,279	2,018	1,989	2,394
Mt. Wachusett*	287	363	216	261	224	347	419
North Shore	591	623	520	703	707	716	814
Northern Essex**	1,002	1,049	1,279	981	1,067	576	682
Quinsigamond*	79	140	427	32	382	338	345
Roxbury	17	17	23	45	69	94	135
Springfield Technical	550	578	420	381	499	506	459
Community Colleges	5,020	5,924	7,398	7,041	6,836	7,121	7,981

Source: 1997-2003 Campus Data provided by the Community College Executive Office;

2004 data from HEIRS, based on Non-Credit course data coded as Workforce Development or CEU/PDP;

2004 data for Cape Cod, Mass Bay, Quinsigamond and Roxbury was self-reported;

2005 data from HEIRS, based on Non-Credit course data coded as Workforce Development or CEU/PDP;

2005 and 2006 data for Quinsigamond was self-reported

*FY 2003 Data for Mt. Wachusett, Middlesex and Quinsigamond are from HEIRS

**See endnotes section

Annual Enrollment in Not-for-Credit Workforce Development Courses

	FY 2000	FY 2001	FY 2002	FY 2003	FY 2004	FY 2005	FY 2006
Berkshire	1,024	1,059	1,211	1,063	1,297	1,444	1,622
Bristol	8,091	9,712	7,960	8,195	9,517	9,931	12,155
Bunker Hill	2,111	3,974	3,075	3,701	4,039	3,106	3,349
Cape Cod	1,535	1,871	1,676	1,837	1,831	1,898	2,290
Greenfield	1,307	1,229	1,098	1,460	1,533	1,580	1,537
Holyoke	1,302	2,205	3,101	3,923	3,827	2,792	5,520
Mass Bay**	3,168	1,957	1,070	1,881	2,241	2,219	1,532
Massasoit	3,644	3,693	3,387	2,864	2,901	3,705	3,874
Middlesex*	7,865	11,234	15,958	24,588	22,611	18,065	17,495
Mt. Wachusett*	3,321	2,854	1,651	3,261	3,480	4,125	5,574
North Shore	6,291	5,134	3,882	4,763	4,643	5,197	5,277
Northern Essex**	8,191	9,716	3,967	5,219	14,074	10,666	16,759
Quinsigamond*	1,119	2,496	2,382	330	1,723	2,899	2,909
Roxbury	706	706	982	180	1,384	981	1,254
Springfield Technical	5,794	5,872	5,657	3,153	4,079	4,294	3,369
Community Colleges	55,469	63,712	57,057	66,418	79,180	70,139	84,516

Source: 1997-2003 Campus Data provided by the Community College Executive Office;

2004 data from HEIRS, based on Non-Credit course enrollment data coded as Workforce Development or CEU/PDP;

2004 data for Cape Cod, Mass Bay, Quinsigamond and Roxbury was self-reported;

2005 data from HEIRS, based on Non-Credit course data coded as Workforce Development or CEU/PDP;

2005 - 2006 data for Quinsigamond was self-reported;

*FY 2003 Data for Mt. Wachusett, Middlesex and Quinsigamond are from HEIRS;

** See section endnotes

Performance Accountability Objective: Cost Effective Use of Resources

- ❑ Capital Adaptation and Renewal
- ❑ Institutional Support Costs Compared to Peer Average

Capital Adaptation and Renewal Expenditures

	FY 2000	FY 2001	FY 2002	FY 2003	FY 2004	FY 2005	FY 2006	Three-year Rolling Avg FY 2002 to FY 2004	Three-year Rolling Avg FY 2003 to FY 2005	Three-year Rolling Avg FY 2004 to FY 2006
Berkshire*	5.7%	7.8%	5.5%	5.6%	4.4%	1.8%	4.6%	5.2%	3.9%	3.6%
Bristol*	4.9%	5.3%	4.7%	5.3%	5.3%	7.3%	7.0%	5.1%	6.0%	6.6%
Bunker Hill	6.4%	5.4%	5.6%	6.2%	5.9%	11.0%	7.9%	5.9%	7.8%	8.4%
Cape Cod	5.1%	5.0%	6.1%	6.9%	5.2%	5.3%	8.5%	6.1%	5.8%	6.4%
Greenfield*	3.7%	1.5%	1.7%	13.6%	1.4%	3.3%	6.3%	5.5%	6.0%	3.8%
Holyoke*	4.7%	5.6%	2.8%	5.4%	5.6%	7.3%	6.8%	4.6%	6.1%	6.6%
Mass Bay*	4.6%	5.6%	8.0%	17.3%	14.4%	3.2%	4.9%	13.4%	11.6%	7.5%
Massasoit*	4.7%	4.4%	2.8%	5.3%	5.2%	5.2%	4.8%	4.0%	5.0%	5.0%
Middlesex	4.9%	5.0%	5.9%	8.8%	35.6%	6.5%	5.1%	18.0%	17.4%	15.2%
Mt. Wachusett	7.9%	7.3%	5.4%	13.5%	16.0%	6.8%	10.6%	11.7%	11.9%	11.1%
North Shore	5.2%	7.0%	5.7%	9.7%	5.3%	6.0%	6.0%	6.9%	7.0%	5.8%
Northern Essex	5.3%	6.7%	5.8%	5.2%	5.2%	33.7%	5.2%	5.4%	14.0%	13.8%
Quinsigamond	7.2%	5.5%	9.6%	11.3%	5.2%	6.5%	3.4%	8.5%	7.5%	5.0%
Roxbury*	3.3%	5.2%	4.6%	5.7%	1.9%	4.7%	6.0%	3.9%	4.2%	4.3%
Springfield Technical*	6.2%	5.2%	5.5%	4.5%	11.2%	20.8%	16.8%	7.0%	12.2%	16.4%
CC Total	5.4%	5.5%	5.4%	8.0%	9.6%	9.2%	7.1%	7.8%	9.0%	8.6%

Source: Institutional Budget Worksheets

"The sources of funding for A&R expenditures include: GAA bonds, state appropriations, local funds, HEFA bonds, TELP financing, and grant revenue".

***Notes:**

Greenfield received waivers from FY2000 to FY2004 due to campus-wide renovation.

Bristol, Holyoke and Massasoit received waivers for FY2002.

Mass Bay and Springfield received waivers for FY2003.

Berkshire, Greenfield and Roxbury received a waiver in FY2006.

Board Policy for Capital Adaptation and Renewal	The three-year rolling average percentage spent on capital adaptation and renewal can be no less than:						
	FY00	FY01	FY02	FY03	FY04	FY05	FY06
	4.5%	5.0%	5.0%	5.0%	5.0%	5.0%	5.0%

Institutional Support Costs per Fall Headcount Compared to Peer Average

	FY 1997		FY 1998		FY 1999		FY 2000		FY 2001		FY 2002	
	Unrestricted Institutional Support per		Unrestricted Institutional Support per		Unrestricted Institutional Support per		Total Institutional Support per		Total Institutional Support per		Total Institutional Support per	
	Fall Headcount	Peer Average	Fall Headcount	Peer Average	Fall Headcount	Peer Average	Fall Headcount	Peer Average	Fall Headcount	Peer Average	Fall Headcount	Peer Average
Berkshire****	\$891	\$790	\$1,006	\$832	\$782	\$874	\$1,490	\$1,150	\$1,213	\$1,089	\$853	\$1,096
Bristol	\$503	\$969	\$577	\$930	\$694	\$986	\$773	\$1,105	\$782	\$973	\$747	\$1,068
Bunker Hill***	\$715	\$903	\$711	\$999	\$733	\$1,186	\$589	\$1,327	\$721	\$1,028	\$663	\$1,223
Cape Cod	\$676	\$1,098	\$602	\$1,028	\$612	\$1,099	\$582	\$1,137	\$650	\$1,013	\$491	\$1,019
Greenfield	\$745	\$828	\$900	\$890	\$1,096	\$953	\$976	\$1,152	\$1,148	\$1,029	\$1,070	\$1,210
Holyoke	\$640	\$857	\$787	\$897	\$746	\$959	\$902	\$1,044	\$815	\$1,038	\$810	\$1,045
Mass Bay	\$433	\$663	\$529	\$714	\$455	\$773	\$834	\$809	\$923	\$759	\$874	\$770
Massasoit	\$707	\$963	\$694	\$1,003	\$810	\$1,129	\$779	\$1,183	\$807	\$1,213	\$867	\$1,200
Middlesex	\$655	\$960	\$681	\$1,031	\$677	\$1,094	\$728	\$1,167	\$807	\$1,148	\$773	\$1,087
Mt. Wachusett	\$616	\$822	\$812	\$869	\$921	\$939	\$835	\$1,063	\$931	\$968	\$731	\$998
North Shore	\$774	\$908	\$897	\$951	\$907	\$1,045	\$1,139	\$1,103	\$1,181	\$956	\$1,025	\$1,010
Northern Essex	\$684	\$873	\$733	\$897	\$781	\$914	\$805	\$1,209	\$820	\$973	\$738	\$900
Quinsigamond	\$730	\$806	\$728	\$906	\$710	\$942	\$783	\$1,086	\$860	\$994	\$658	\$939
Roxbury	\$1,024	\$1,298	\$809	\$1,301	\$974	\$1,465	\$1,045	\$1,718	\$1,096	\$1,433	\$1,175	\$1,392
Springfield Tech*	\$686	\$845	\$752	\$951	\$794	\$820	\$902	\$939	\$941	\$852	\$837	\$852
CC Total												

	FY 2003**		FY 2004**		FY 2005**	
	Total Institutional Support per		Total Institutional Support per		Total Institutional Support per	
	Fall Headcount	Peer Average	Fall Headcount	Peer Average	Fall Headcount	Peer Average
\$1,169	\$836	\$926	\$864	\$1,082	\$1,030	
\$727	\$1,020	\$731	\$1,020	\$737	\$1,041	
\$616	\$1,008	\$678	\$942	\$646	\$966	
\$607	\$766	\$565	\$809	\$621	\$849	
\$871	\$1,189	\$1,024	\$1,098	\$1,307	\$1,224	
\$836	\$988	\$863	\$979	\$910	\$1,023	
\$1,052	\$753	\$871	\$772	\$982	\$729	
\$825	\$1,107	\$640	\$1,100	\$925	\$1,150	
\$752	\$1,027	\$771	\$1,110	\$753	\$1,050	
\$680	\$925	\$701	\$927	\$806	\$986	
\$871	\$837	\$779	\$949	\$803	\$948	
\$743	\$920	\$887	\$1,072	\$728	\$1,074	
\$580	\$728	\$577	\$753	\$648	\$768	
\$1,000	\$1,336	\$1,070	\$1,393	\$1,230	\$1,429	
\$652	\$980	\$721	\$982	\$879	\$991	
\$767		\$758		\$821		

Source: IPEDS Finance, Institutional Characteristics and Enrollment Surveys

* STCC FY04 data are from FY2005 audited financial statement reflecting FY2004 restatement of Institutional Support costs

** New Peers (established Aug 04) used.

*** Bunker Hill CC Peer Data for FY03, FY04 and FY05 has been modified, it includes data for 6 peer institutions only

****Berkshire CC removed one peer in FY05

Institutional Support Costs as a Percentage of Total Educational and General Expenditures Compared to Peer Average

(Institutional Support as a Percentage of Total Education and General Expenditures)

	FY 1997		FY 1998		FY 1999		FY 2000		FY 2001		FY 2002	
	% Institutional Support Cost		% Institutional Support Cost		% Institutional Support Cost		% Institutional Support Cost		% Institutional Support Cost		% Institutional Support Cost	
	Peer Avg.	Peer Avg.	Peer Avg.	Peer Avg.	Peer Avg.	Peer Avg.	Peer Avg.	Peer Avg.	Peer Avg.	Peer Avg.	Peer Avg.	Peer Avg.
Berkshire****	17.2%	19.3%	15.8%	18.8%	12.8%	18.5%	21.1%	20.4%	16.2%	20.5%	11.4%	19.5%
Bristol	13.4%	18.7%	14.5%	20.4%	15.5%	17.8%	16.6%	17.7%	14.5%	17.1%	14.7%	18.5%
Bunker Hill***	17.2%	19.3%	16.7%	19.5%	16.8%	19.9%	12.3%	20.3%	12.4%	16.3%	12.6%	19.2%
Cape Cod	13.7%	19.8%	12.0%	19.7%	11.7%	19.7%	11.8%	19.4%	11.7%	18.9%	12.0%	19.2%
Greenfield	13.3%	17.3%	16.1%	17.0%	10.5%	9.9%	16.3%	18.7%	15.9%	18.3%	16.5%	20.5%
Holyoke	14.6%	18.1%	17.8%	17.4%	16.7%	18.5%	16.4%	18.0%	14.3%	18.3%	15.2%	19.1%
Mass Bay	11.6%	13.8%	12.3%	14.8%	9.4%	15.4%	15.9%	14.9%	14.3%	14.8%	17.0%	15.1%
Massasoit	15.1%	18.0%	14.4%	18.4%	15.0%	19.5%	17.2%	18.0%	14.8%	18.6%	16.9%	18.0%
Middlesex	12.6%	19.9%	12.4%	19.9%	13.1%	20.4%	13.1%	20.2%	14.3%	20.3%	13.6%	18.6%
Mount Wachusett	9.8%	17.6%	11.5%	17.2%	15.4%	16.9%	13.2%	17.5%	12.9%	16.6%	11.1%	17.4%
North Shore	15.5%	20.4%	16.5%	20.4%	17.1%	18.3%	19.0%	17.9%	18.3%	16.0%	16.7%	16.5%
Northern Essex	16.0%	19.5%	15.5%	19.9%	15.4%	19.4%	15.7%	21.1%	16.5%	18.2%	15.1%	18.2%
Quinsigamond	17.5%	17.9%	16.7%	17.8%	17.2%	17.8%	17.7%	18.4%	17.1%	17.1%	13.3%	17.0%
Roxbury	14.3%	22.5%	10.7%	22.8%	13.1%	23.5%	13.7%	24.6%	14.5%	22.2%	15.8%	20.2%
Springfield Tech*	13.2%	18.3%	15.1%	18.1%	15.9%	18.1%	15.0%	17.7%	14.3%	17.3%	13.0%	17.7%
CC Total												

	FY 2003**		FY 2004**		FY 2005**	
	% Institutional Support Cost		% Institutional Support Cost		% Institutional Support Cost	
	Peer Avg.	Peer Avg.	Peer Avg.	Peer Avg.	Peer Avg.	Peer Avg.
15.3%	14.9%	13.9%	15.4%	15.9%	16.4%	
14.5%	19.2%	14.2%	18.6%	14.0%	18.7%	
12.3%	17.7%	12.9%	17.5%	12.1%	17.4%	
11.6%	14.8%	11.5%	14.9%	12.2%	14.8%	
12.7%	16.9%	15.3%	15.9%	17.8%	16.7%	
15.9%	19.1%	16.8%	18.4%	16.8%	18.5%	
19.8%	15.0%	17.1%	15.5%	17.6%	14.3%	
17.0%	18.3%	12.6%	18.1%	17.4%	18.2%	
14.0%	17.1%	14.6%	18.5%	13.2%	17.6%	
11.2%	16.2%	11.4%	16.7%	11.7%	16.4%	
14.8%	15.9%	14.2%	17.4%	13.8%	16.7%	
15.9%	18.0%	16.2%	19.2%	12.5%	19.5%	
13.1%	16.3%	12.2%	16.7%	11.9%	16.4%	
13.5%	20.1%	13.8%	21.4%	14.3%	20.9%	
10.8%	13.9%	11.7%	13.7%	12.8%	13.7%	
14.2%		13.9%		14.1%		

Source: IPEDS Finance Survey

* STCC FY04 data are from FY2005 audited financial statement reflecting FY2004 restatement of Institutional Support costs

** New Peers (established Aug 04) used.

*** Bunker Hill CC Peer Data for FY03 has been modified, it includes data for 6 peer institutions only

****Berkshire CC removed one peer in FY05

Performance Accountability Objective: Fundraising

- Total Private Funds Received at Both the Institution and the Foundation

Total Private Funds Received
(Institution and Foundation)

	FY 2002	FY 2003	FY 2004	FY 2005	FY 2006
Berkshire	\$122,830	\$55,814	\$43,016	\$223,859	\$213,305
Bristol	\$698,982	\$754,550	\$740,348	\$636,225	\$1,494,282
Bunker Hill	\$90,255	\$173,805	\$179,614	\$209,049	\$263,270
Cape Cod	\$2,056,023	\$3,232,072	\$917,531	\$1,237,857	\$1,348,171
Greenfield	\$170,553	\$217,221	\$227,278	\$506,785	\$620,219
Holyoke	\$481,889	\$806,818	\$1,592,664	\$980,220	\$1,006,672
Mass Bay	\$299,315	\$426,928	\$59,869	\$179,352	\$30,125
Massasoit	\$78,495	\$79,638	\$87,658	\$102,690	\$59,824
Middlesex	\$481,926	\$171,327	\$369,621	\$501,577	\$676,343
Mt. Wachusett*	\$15,680	\$182,061	\$802,715	\$1,663,464	\$1,659,005
North Shore	\$613,001	\$400,145	\$514,228	\$591,201	\$573,668
Northern Essex*	\$386,604	\$1,225,290	\$1,188,868	\$1,101,550	\$851,850
Quinsigamond	\$1,572,590	\$632,759	\$896,480	\$1,438,791	\$1,180,889
Roxbury*	NA	\$282,540	\$61,354	\$198,200	\$216,843
Springfield Technical	\$1,413,077	\$847,648	\$767,729	\$1,035,650	\$886,621
Community College Total	\$8,481,220	\$9,488,616	\$8,448,973	\$10,606,470	\$11,081,087

Source: Institutional Budget Worksheets

* See Endnotes Section

NA = Data not submitted

Endnotes

Performance Accountability Objective: Access & Affordability

Annual Unduplicated Credit Headcount

Berkshire

Between 1999-2000 and 2001-2002 BCC experienced a decline in headcount. Three factors contributed to the enrollment trend for these years:

1. Beginning in 1999-2000, BCC eliminated one cycle of its federally funded CASS program leading to a loss of 21 international students in the annual headcount.
2. During the interval between 2000-2001 and 2001-2002, Berkshire County's pool of traditional college bound students declined by over 6.3%.
3. A significant economic decline in the region coupled with industry downsizing and/or closings contributed to a loss of non-traditional student enrollment during this same two-year period. While the annual data presented is accurate, because the forces influencing enrollment were unanticipated and unique, it does not adequately reflect performance.

Annual Unduplicated Credit Headcount

Cape Cod

Prior to 2001-2002, Cape Cod reported to IPEDS an annual unduplicated credit headcount which excluded any student enrolled only in developmental education (remedial education) courses, which do not satisfy general education or degree requirements, but do carry institutional credit. The 2001-2002 count includes such students. This change should be noted when comparing Cape Cod's FY2002 headcount with prior years

Annual Unduplicated Credit Headcount / Annual FTE Enrollment

North Shore

Starting in FY 2000 North Shore absorbed six Certificate programs and nine Associates in Applied Science Programs that had previously been offered at Essex Agricultural and Technical Institute.

Annual Unduplicated Credit Headcount / Annual FTE Enrollment

Quinsigamond

In FY 2000 Quinsigamond absorbed four certificate programs and seven Associate of Science programs that had previously been offered at Worcester Technical Institute.

Fall Unduplicated Credit Headcount

Berkshire

The substantial decline in fall enrollment statistics for 2001 and 2002 resulted from the same factors influencing the college's annual enrollment data for this same time period

Fall Unduplicated Credit Headcount

Bristol

A review of enrollment and completions data revealed two minor discrepancies. First, the Fall 2001 enrollment figure was 6,124. A review of the Fall 2001 data demonstrated that the HEIRS file had 6,130 students and the IPEDS file had 6,132. The final approved figure (HEIRS sign-off) was 6,130. Six students who had originally shown in the HEIRS file as having zero credits actually had credits and should appear in the linear trend analysis

Fall Unduplicated Credit Headcount / Fall FTE Enrollment

North Shore

Starting in FY 2000 North Shore absorbed six Certificate programs and nine Associates in Applied Science Programs that had previously been offered at Essex Agricultural and Technical Institute.

Performance Accountability Objective: Access & Affordability

Fall Unduplicated Credit Headcount / Fall FTE Enrollment**Quinsigamond**

In FY 2000 Quinsigamond absorbed four certificate programs and seven Associate of Science programs that had previously been offered at Worcester Technical Institute.

Total Student Charges as Percent of State Median Household Income**Greenfield**

Although Greenfield Community College data reflect an increase in charges for 1997 compared to 2002, GCC student charges as a percent of state median income has actually decreased.

Performance Accountability Objective: Student Access & Success

Fall to Fall Persistence Rate**Mount Wachusett**

Mount Wachusett Community College's fall 2002 cohort used for persistence analysis is inaccurate due to a logic error discovered in the HEIRS extract program used to produce the file for submission. This logic error has been corrected but the college is unable to accurately recreate the cohort from historic records. Thus, MWCC's cohort count used for this analysis is overstated.

Degrees and Certificates Awarded**Bristol**

The number of FY 1997 graduates reported in the trend book is 637. The College's IPEDS report contains 647 graduates. HEIRS I was converted to HEIRS II between 1997 and 1998, and it is possible that the conversion with its accompanying edit checks resulted in this slight change.

Degrees and Certificates Awarded**Cape Cod**

For FY2002, Cape Cod ceased matriculating Certified Nurse Aide students and ceased awarding formal certificates to Certified Nurse Aide students who successfully completed the seven credit course of study. Students completed the course of study and were positively placed, but did not receive certificates. This change is reflected in the decrease in the number of total certificates (96 certificates) reported to IPEDS for FY2002, compared to FY2001 (127 certificates) and prior years. For FY2001, 36 Nurse Assistant/Aide certificates were conferred. For FY2002, none were conferred. Therefore, Cape Cod's # and % Change FY97-FY02 for Certificates and Degrees should be viewed in the light of this change in practice

Degrees and Certificates Awarded**Massasoit**

Massasoit began tracking completers of short-term certificates (fewer than 30 credits) in FY04. Certificates reported prior to FY04 include only those who earned a board-certified award (30 or more credits).

Performance Accountability Objective: Meet Regional and Workforce Development Needs

Annual Number of Not-for-credit Workforce Development/Job Skill Training Courses

Annual Enrollment in Not-for-credit Workforce Development Courses

Northern Essex Community College

In FY00 and FY01, NECC had large enrollments and course loads through its delivery of in-plant and pre-employment courses for Lucent Technologies (pre-employment training alone accounted for hundreds of courses and enrollments in excess of 8,500 during those two years).

The FY00-02 period saw a growth of training programs through the WTF, thus offsetting some of the drop in totals for FY02 caused by the loss of Lucent and the effects of 9/11 on contractual training.

FY03 saw a decline in WTF activity and a continued lack of corporate contractual training, although enrollment was up, in part due to individuals enrolling in our Continuing Ed workforce development programs and the HRD programs. In addition the reorganization of CES in FY03 resulted in a streamlining of the number of workforce development courses offered through that area of the college in order to reduce program costs and improve cancellation rates.

Annual Number of Not-for-credit Workforce Development/Job Skill Training Courses

Annual Enrollment in Not-for-credit Workforce Development Courses

Mass Bay Community College

Mass Bay Community College's FY 2002 data both courses and enrollment are incomplete but the College is unable to reconstruct the correct numbers with verifiable records.

Performance Accountability Objective: Fundraising

Total Private Funds Received

Mount Wachusett

For FY 2002, Mount Wachusett only reported restricted funds when it submitted budget worksheets. The correct amount of total private funds received is \$149,419.

Total Private Funds Received

Northern Essex

For FY 2002, Northern Essex only reported numbers listed in its annual gift campaign when submitted budget worksheets. The correct amount of total private funds received is \$998,657.

Total Private Funds Received - Independent financial audit

Roxbury

The Fiscal Year 2002 Independent Audit for Roxbury Community has not yet been completed. As a result, certain FY 2002 fiscal data for Roxbury Community College does not currently exist, and "NA" is assigned to these categories

APPENDIX A

Fall Unduplicated Credit Headcount

Northern Essex did not accurately report data to IPEDS for Fall 1991 and Fall 1992. Fall 1991 enrollment was 6,679 and Fall 1992 6,867.

Northern Essex

Degrees Conferred

For FY2002, Cape Cod ceased matriculating Certified Nurse Aide students and ceased awarding formal certificates to Certified Nurse Aide students who successfully completed the seven credit course of study. Students completed the course of study and were positively placed, but did not receive certificates. This change is reflected in the decrease in the number of total certificates (96 certificates) reported to IPEDS for FY2002, compared to FY2001 (127 certificates) and prior years. For FY2001, 36 Nurse Assistant/Aide certificates were conferred. For FY2002, none were conferred. The FY1997-FY2002 # Change (-60) and % Change (-12.5%) were affected by the change in practice effective FY2002 discontinuing matriculation of and conferral of certificates on Nurse Aide students.

Cape Cod

Degrees and Certificates Awarded

Massasoit began tracking completers of short-term certificates (fewer than 30 credits) in FY04. Certificates reported prior to FY04 include only those who earned a board-certified award (30 or more credits).

Massasoit

Appendices

- Appendix A:
 - Fall Unduplicated Credit Headcount
 - Total Degrees Conferred
- Appendix B:
 - Tuition and Fees at Massachusetts Public Colleges and University
- Appendix C:
 - Community College 80% Draw Communities
 - Regions of Massachusetts

Fall Unduplicated Credit Headcount Fall 1990 to Fall 2005

Institution	Fall 1990	Fall 1991	Fall 1992	Fall 1993	Fall 1994	Fall 1995	Fall 1996	Fall 1997	Fall 1998	Fall 1999	Fall 2000	Fall 2001	Fall 2002	Fall 2003	Fall 2004	Fall 2005
Berkshire	2,621	2,442	2,496	2,585	2,445	2,388	2,351	2,328	2,439	2,431	2,494	2,401	2,254	2,272	2,364	2,328
Bristol	4,999	4,986	5,215	5,159	5,299	4,850	4,884	5,117	5,518	6,033	6,066	6,124	6,346	6,639	6,864	6,873
Bunker Hill	5,606	4,646	4,752	4,636	6,304	6,511	6,154	6,254	7,129	6,543	6,386	6,914	7,211	7,397	7,821	7,837
Cape Cod	4,326	4,418	3,943	4,083	3,733	3,641	3,457	3,327	3,623	3,952	4,063	4,294	4,119	4,287	4,107	4,175
Greenfield	2,351	2,313	2,554	2,528	2,411	2,175	2,246	2,159	2,240	2,274	2,277	2,355	2,254	2,368	2,353	2,217
Holyoke	5,318	5,188	5,526	5,500	5,418	5,402	5,140	5,322	5,468	5,619	5,754	5,998	6,117	6,335	6,298	6,265
Mass Bay	4,662	4,668	5,229	5,211	5,036	5,252	4,518	4,418	4,801	4,624	4,676	5,173	4,994	5,380	5,132	5,015
Massasoit	6,670	6,418	6,777	6,421	5,766	5,754	5,696	5,917	6,646	6,674	6,842	6,985	7,003	6,808	6,908	6,706
Middlesex	7,016	6,906	7,197	7,112	6,536	6,047	5,945	6,166	6,664	6,933	7,451	7,568	7,979	8,366	8,122	8,008
Mt. Wachusett	3,680	3,820	4,004	4,242	3,724	2,873	2,797	2,956	3,194	3,446	3,397	3,711	3,946	4,118	4,165	4,170
North Shore	5,780	5,621	6,286	6,476	5,974	5,275	5,239	5,131	5,529	6,101	6,285	6,100	6,106	6,612	6,690	6,604
Northern Essex	6,647	6,679	6,867	7,035	6,354	6,139	5,597	5,766	5,803	6,376	6,580	6,372	6,621	6,300	6,194	6,362
Quinsigamond	4,703	4,665	4,786	4,732	4,458	4,676	4,691	5,062	5,178	5,279	5,713	6,183	6,621	6,592	6,100	5,969
Roxbury	1,886	1,804	2,040	1,991	2,709	2,458	2,125	2,207	2,334	2,382	2,699	2,712	2,515	2,365	2,180	2,236
STCC	5,866	5,880	6,202	6,394	6,193	6,027	6,126	6,381	6,590	6,497	6,694	6,257	6,282	6,157	6,114	5,823
Community College Total	72,131	70,454	73,874	74,105	72,360	69,468	66,966	68,511	73,156	75,164	77,377	79,147	80,368	81,996	81,412	80,588

Sources: IPEDS Fall 1990 - Fall 1994; HEIRS Fall 1995 - Fall 2005

Total Degrees Conferred FY 1991 to FY 2006

Institution	FY 1991	FY 1992	FY 1993	FY 1994	FY 1995	FY 1996	FY 1997	FY 1998	FY 1999	FY 2000	FY 2001	FY 2002	FY 2003	FY 2004	FY 2005	FY 2006
Berkshire	349	360	316	284	294	302	289	310	303	320	305	357	292	349	321	320
Bristol	650	650	526	602	589	509	637	687	755	657	755	790	834	843	936	1007
Bunker Hill	626	626	321	529	477	476	516	515	469	509	487	403	602	685	679	686
Cape Cod*	404	422	377	359	470	413	438	464	449	395	434	421	371	425	430	488
Greenfield	390	415	403	470	439	359	362	359	372	405	416	383	370	371	355	355
Holyoke	643	674	653	603	673	690	623	663	676	718	701	745	863	918	987	881
Mass Bay	558	558	591	539	524	567	599	564	564	648	594	530	510	631	704	656
Massasoit*	847	847	1,203	785	791	805	761	750	680	730	701	708	669	746	747	901
Middlesex**	853	859	1,023	1,030	881	1,007	876	833	760	774	873	842	888	1,092	1,003	1,004
Mt. Wachusett	636	708	667	661	679	510	551	516	540	490	524	481	494	547	644	665
North Shore	740	735	748	761	936	777	694	738	668	790	789	725	657	711	789	839
Northern Essex	837	837	895	838	798	785	745	682	679	586	607	746	771	765	839	826
Quinsigamond	689	670	712	741	728	695	687	678	619	654	662	670	709	730	726	747
Roxbury	190	453	420	175	21	100	167	179	127	131	176	213	176	243	229	196
Springfield Technical	713	713	942	787	733	773	745	852	920	871	875	803	873	871	910	875
Community College Total	9,125	9,527	9,797	9,164	9,033	8,768	8,690	8,790	8,581	8,678	8,899	8,817	9,079	9,927	10,299	10,446

Sources: IPEDS Completions FY 1991-1994; HEIRS FY 1995-2006

** Degrees conferred data for FY 1991-FY 1994 were obtained through the IPEDS peer analysis system for the years in question and do not match data as originally submitted and signed off by the college.

Note: The number of degrees awarded at some institutions is the same for both FY 1991 and FY 1992 as NCES status flag record shows that the FY1992 completions file was not submitted.

Tuition at Massachusetts Public Colleges and University
(Based on Fall Resident Undergraduate State-Supported Rates)

	1995/96	1996/97	1997/98	1998/99	1999/00	2000/01	2001/02	2002/03	2003/04	2004/05	2005/06	2006/07	1 Yr % Chg
UMass Amherst	\$2,220	\$2,109	\$2,004	\$1,904	\$1,714	\$1,714	\$1,714	\$1,714	\$1,714	\$1,714	\$1,714	\$1,714	0%
UMass Boston	\$2,220	\$2,109	\$2,004	\$1,904	\$1,714	\$1,714	\$1,714	\$1,714	\$1,714	\$1,714	\$1,714	\$1,714	0%
UMass Dartmouth	\$1,836	\$1,744	\$1,657	\$1,574	\$1,417	\$1,417	\$1,417	\$1,417	\$1,417	\$1,417	\$1,417	\$1,418	0%
UMass Lowell	\$1,884	\$1,790	\$1,700	\$1,615	\$1,454	\$1,454	\$1,454	\$1,454	\$1,454	\$1,454	\$1,454	\$1,454	0%
Bridgewater	\$1,408	\$1,338	\$1,270	\$1,150	\$1,030	\$970	\$910	\$910	\$910	\$910	\$910	\$910	0%
Fitchburg	\$1,408	\$1,338	\$1,270	\$1,210	\$1,090	\$1,030	\$970	\$970	\$970	\$970	\$970	\$970	0%
Framingham	\$1,408	\$1,338	\$1,270	\$1,210	\$1,090	\$1,030	\$970	\$970	\$970	\$970	\$970	\$970	0%
MassArt	\$1,463	\$1,390	\$1,320	\$1,260	\$1,140	\$1,090	\$1,030	\$1,030	\$1,030	\$1,030	\$1,030	\$1,030	0%
MCLA	\$1,408	\$1,338	\$1,270	\$1,210	\$1,090	\$1,090	\$1,030	\$1,030	\$1,030	\$1,030	\$1,030	\$1,030	0%
Mass Maritime	\$1,463	\$1,390	\$1,320	\$1,260	\$1,140	\$1,090	\$1,030	\$1,030	\$1,030	\$1,030	\$1,062	\$1,094	3%
Salem	\$1,408	\$1,338	\$1,270	\$1,150	\$1,030	\$970	\$910	\$910	\$910	\$910	\$910	\$910	0%
Westfield	\$1,408	\$1,338	\$1,270	\$1,210	\$1,090	\$1,030	\$970	\$970	\$970	\$970	\$970	\$970	0%
Worcester	\$1,408	\$1,338	\$1,270	\$1,210	\$1,090	\$1,030	\$970	\$970	\$970	\$970	\$970	\$970	0%
Berkshire	\$1,140	\$1,080	\$1,020	\$960	\$870	\$780	\$780	\$780	\$780	\$780	\$780	\$780	0%
Bristol	\$1,200	\$1,080	\$1,020	\$900	\$810	\$720	\$720	\$720	\$720	\$720	\$720	\$720	0%
Bunker Hill	\$1,200	\$1,080	\$1,020	\$900	\$810	\$720	\$720	\$720	\$720	\$720	\$720	\$720	0%
Cape Cod	\$1,200	\$1,080	\$1,020	\$930	\$840	\$720	\$720	\$720	\$720	\$720	\$720	\$720	0%
Greenfield	\$1,140	\$1,080	\$1,020	\$960	\$870	\$780	\$780	\$780	\$780	\$780	\$780	\$780	0%
Holyoke	\$1,200	\$1,080	\$1,020	\$900	\$810	\$720	\$720	\$720	\$720	\$720	\$720	\$720	0%
Massachusetts Bay	\$1,200	\$1,080	\$1,020	\$930	\$840	\$720	\$720	\$720	\$720	\$720	\$720	\$720	0%
Massasoit	\$1,200	\$1,080	\$1,020	\$930	\$840	\$720	\$720	\$720	\$720	\$720	\$720	\$720	0%
Middlesex	\$1,200	\$1,080	\$1,020	\$900	\$810	\$720	\$720	\$720	\$720	\$720	\$720	\$720	0%
Mount Wachusett	\$1,200	\$1,080	\$1,020	\$960	\$870	\$750	\$750	\$750	\$750	\$750	\$750	\$750	0%
North Shore	\$1,200	\$1,080	\$1,020	\$900	\$810	\$750	\$750	\$750	\$750	\$750	\$750	\$750	0%
Northern Essex	\$1,200	\$1,080	\$1,020	\$930	\$840	\$750	\$750	\$750	\$750	\$750	\$750	\$750	0%
Quinsigamond	\$1,200	\$1,080	\$1,020	\$900	\$810	\$720	\$720	\$720	\$720	\$720	\$720	\$720	0%
Roxbury	\$1,200	\$1,080	\$1,020	\$930	\$840	\$780	\$780	\$780	\$780	\$780	\$780	\$780	0%
STCC	\$1,200	\$1,080	\$1,020	\$930	\$840	\$750	\$750	\$750	\$750	\$750	\$750	\$750	0%
Weighted Average UMass*	\$2,105	\$2,004	\$1,904	\$1,808	\$1,628	\$1,626	\$1,624	\$1,619	\$1,618	\$1,618	\$1,618	\$1,618	0%
Weighted Average State Colleges*	\$1,413	\$1,342	\$1,274	\$1,190	\$1,071	\$1,014	\$955	\$954	\$954	\$953	\$954	\$955	0%
Weighted Average State Colleges excludes MCA and MMA*	\$1,408	\$1,338	\$1,270	\$1,184	\$1,064	\$1,007	\$947	\$947	\$947	\$946	\$946	\$946	0%
Weighted Average Community Colleges*	\$1,196	\$1,080	\$1,020	\$919	\$829	\$735	\$734	\$734	\$734	\$734	\$734	\$734	0%
Weighted Average All Colleges and University*	\$1,571	\$1,478	\$1,388	\$1,293	\$1,166	\$1,111	\$1,091	\$1,082	\$1,078	\$1,076	\$1,076	\$1,080	0%
Weighted Average All Colleges and University excludes MCA and MMA*	\$1,576	\$1,480	\$1,400	\$1,294	\$1,167	\$1,111	\$1,092	\$1,083	\$1,079	\$1,077	\$1,077	\$1,080	0%

Source: Tuition and Fee Survey

*Weighted data calculated based on % Undergraduate FTE of total by Segment and overall. 2005/06 values are based on Fall-2004 FTE until updated FTE data is available

Mandatory Fees at Massachusetts Public Colleges and University
(Based on Fall Resident Undergraduate State-Supported Rates)

	1995/96	1996/97	1997/98	1998/99	1999/00	2000/01	2001/02	2002/03	2003/04	2004/05	2005/06	2006/07	1 Yr % Chg
UMass Amherst	\$3,294	\$3,304	\$3,325	\$3,325	\$3,498	\$3,498	\$3,498	\$4,768	\$5,768	\$7,294	\$7,564	\$7,886	4%
UMass Boston	\$2,180	\$2,234	\$2,288	\$2,288	\$2,508	\$2,508	\$2,508	\$3,508	\$4,518	\$6,310	\$6,551	\$6,834	4%
UMass Dartmouth	\$2,286	\$2,407	\$2,597	\$2,597	\$2,712	\$2,712	\$2,712	\$3,712	\$4,712	\$6,385	\$6,619	\$6,894	4%
UMass Lowell	\$2,722	\$2,722	\$2,722	\$2,722	\$2,801	\$2,801	\$2,801	\$3,759	\$4,760	\$6,437	\$6,712	\$6,990	4%
Bridgewater	\$2,102	\$2,102	\$2,033	\$2,033	\$2,033	\$1,913	\$1,913	\$2,825	\$3,480	\$4,416	\$4,596	\$4,956	8%
Fitchburg	\$1,908	\$1,992	\$2,026	\$1,998	\$1,928	\$1,988	\$1,988	\$2,018	\$2,718	\$3,216	\$3,618	\$4,572	13%
Framingham	\$1,900	\$1,890	\$1,880	\$1,860	\$1,800	\$1,800	\$1,800	\$2,364	\$3,354	\$3,684	\$4,029	\$4,484	11%
MassArt	\$2,644	\$2,644	\$2,644	\$2,644	\$2,668	\$2,788	\$3,038	\$3,938	\$4,738	\$5,370	\$5,820	\$6,170	6%
MCLA	\$2,147	\$2,147	\$2,167	\$2,167	\$2,267	\$2,267	\$2,467	\$3,167	\$4,367	\$4,387	\$4,586	\$4,896	7%
Mass Maritime	\$1,657	\$1,784	\$1,784	\$1,784	\$1,784	\$1,783	\$1,883	\$2,633	\$3,833	\$4,133	\$4,246	\$4,580	8%
Salem	\$2,000	\$2,006	\$1,987	\$1,928	\$1,928	\$2,128	\$2,128	\$3,028	\$4,078	\$4,544	\$4,684	\$5,120	9%
Westfield	\$1,785	\$1,824	\$1,824	\$1,824	\$1,884	\$1,886	\$1,986	\$2,785	\$3,588	\$3,887	\$4,688	\$4,980	6%
Worcester	\$1,345	\$1,345	\$1,345	\$1,345	\$1,368	\$1,478	\$1,603	\$2,303	\$3,153	\$3,609	\$4,110	\$4,570	11%
Berkshire	\$1,410	\$1,620	\$1,620	\$1,620	\$1,650	\$1,710	\$1,920	\$2,310	\$2,610	\$2,610	\$2,820	\$2,895	3%
Bristol	\$1,260	\$1,380	\$1,320	\$1,320	\$1,260	\$1,350	\$1,440	\$2,100	\$2,340	\$2,520	\$3,030	\$3,030	0%
Bunker Hill	\$1,200	\$1,320	\$1,320	\$1,290	\$1,230	\$1,230	\$1,230	\$1,680	\$2,280	\$2,280	\$2,280	\$2,280	0%
Cape Cod	\$1,128	\$1,530	\$1,515	\$1,432	\$1,440	\$1,590	\$1,740	\$2,460	\$2,460	\$2,940	\$2,940	\$2,940	0%
Greenfield	\$1,318	\$1,382	\$1,367	\$1,367	\$1,367	\$1,517	\$1,727	\$2,237	\$2,537	\$2,867	\$3,202	\$3,318	4%
Holyoke	\$1,332	\$1,452	\$1,456	\$1,426	\$1,366	\$1,456	\$1,716	\$2,076	\$2,376	\$2,378	\$2,468	\$2,558	4%
Massachusetts Bay	\$1,290	\$1,290	\$1,230	\$1,275	\$1,170	\$1,170	\$1,240	\$2,150	\$2,450	\$2,930	\$2,930	\$2,930	0%
Massasoit	\$1,290	\$1,290	\$1,260	\$1,230	\$1,230	\$1,320	\$1,320	\$1,920	\$2,610	\$2,610	\$2,610	\$2,610	0%
Middlesex	\$1,620	\$1,670	\$1,610	\$1,550	\$1,550	\$1,640	\$1,790	\$2,300	\$2,660	\$2,930	\$2,930	\$3,020	3%
Mount Wachusett	\$1,950	\$1,980	\$1,930	\$1,840	\$1,790	\$1,820	\$1,940	\$2,660	\$3,260	\$3,260	\$3,220	\$3,370	5%
North Shore	\$1,290	\$1,410	\$1,380	\$1,320	\$1,320	\$1,440	\$1,740	\$2,340	\$2,640	\$2,640	\$2,730	\$2,730	0%
Northern Essex	\$1,230	\$1,470	\$1,425	\$1,380	\$1,380	\$1,440	\$1,530	\$1,920	\$2,220	\$2,220	\$2,400	\$2,400	0%
Quinsigamond	\$1,054	\$1,290	\$1,230	\$1,170	\$1,170	\$1,170	\$1,170	\$2,010	\$2,880	\$2,880	\$2,880	\$3,030	5%
Roxbury	\$1,200	\$1,320	\$1,260	\$1,260	\$1,230	\$1,320	\$1,320	\$1,670	\$2,470	\$2,680	\$2,680	\$2,680	0%
STCC	\$1,430	\$1,550	\$1,490	\$1,430	\$1,430	\$1,434	\$1,684	\$1,984	\$2,394	\$2,454	\$2,604	\$2,706	4%
Weighted Average UMass*	\$2,846	\$2,886	\$2,929	\$2,919	\$3,075	\$3,070	\$3,068	\$4,179	\$5,184	\$6,819	\$7,079	\$7,382	4%
Weighted Average State Colleges*	\$1,921	\$1,945	\$1,918	\$1,912	\$1,913	\$1,947	\$1,999	\$2,789	\$3,637	\$4,147	\$4,494	\$4,900	9%
Weighted Average State Colleges excludes MCA and MMA*	\$1,894	\$1,911	\$1,895	\$1,874	\$1,873	\$1,901	\$1,942	\$2,731	\$3,568	\$4,080	\$4,430	\$4,843	9%
Weighted Average Community Colleges*	\$1,328	\$1,450	\$1,413	\$1,378	\$1,354	\$1,418	\$1,538	\$2,098	\$2,532	\$2,646	\$2,743	\$2,792	2%
Weighted Average All Colleges and University*	\$2,014	\$2,093	\$2,059	\$2,044	\$2,091	\$2,119	\$2,172	\$2,959	\$3,675	\$4,381	\$4,594	\$4,836	5%
Weighted Average All Colleges and University excludes MCA and MMA*	\$2,017	\$2,087	\$2,078	\$2,037	\$2,085	\$2,110	\$2,162	\$2,949	\$3,660	\$4,370	\$4,370	\$4,820	10%

Source: Tuition and Fee Survey

*Weighted data calculated based on % Undergraduate FTE of total by Segment and overall. 2005/06 values are based on Fall-2004 FTE until updated FTE data is available

Note: Fees do not include scheduled increase of \$750 effective in spring 2004 per campus at the University of Massachusetts.

Tuition and Mandatory Fees at Massachusetts Public Colleges and University
(Based on Fall Resident Undergraduate State-Supported Rates)

	1995/96	1996/97	1997/98	1998/99	1999/00	2000/01	2001/02	2002/03	2003/04	2004/05	2005/06	2006/07	1 Yr % Chg
UMass Amherst	\$5,514	\$5,413	\$5,329	\$5,229	\$5,212	\$5,212	\$5,212	\$6,482	\$7,482	\$9,008	\$9,278	\$9,600	3%
UMass Boston	\$4,400	\$4,343	\$4,292	\$4,192	\$4,222	\$4,222	\$4,222	\$5,222	\$6,232	\$8,024	\$8,265	\$8,548	3%
UMass Dartmouth	\$4,122	\$4,151	\$4,254	\$4,171	\$4,129	\$4,129	\$4,129	\$5,129	\$6,129	\$7,802	\$8,036	\$8,312	3%
UMass Lowell	\$4,606	\$4,512	\$4,422	\$4,337	\$4,255	\$4,255	\$4,255	\$5,213	\$6,214	\$7,891	\$8,166	\$8,444	3%
Bridgewater	\$3,510	\$3,440	\$3,303	\$3,183	\$3,063	\$2,883	\$2,823	\$3,735	\$4,390	\$5,326	\$5,506	\$5,866	3%
Fitchburg	\$3,316	\$3,330	\$3,296	\$3,208	\$3,018	\$3,018	\$2,988	\$3,688	\$4,186	\$4,588	\$5,002	\$5,542	9%
Framingham	\$3,308	\$3,228	\$3,150	\$3,070	\$2,890	\$2,830	\$2,770	\$3,334	\$4,324	\$4,654	\$4,999	\$5,454	9%
MassArt	\$4,107	\$4,034	\$3,964	\$3,904	\$3,808	\$3,878	\$4,068	\$4,968	\$5,768	\$6,400	\$6,850	\$7,200	5%
MCLA	\$3,555	\$3,485	\$3,437	\$3,377	\$3,357	\$3,357	\$3,497	\$4,197	\$5,397	\$5,417	\$5,616	\$5,926	6%
Mass Maritime	\$3,120	\$3,174	\$3,104	\$3,044	\$2,924	\$2,873	\$2,913	\$3,663	\$4,863	\$5,163	\$5,308	\$5,674	7%
Salem	\$3,408	\$3,344	\$3,257	\$3,078	\$2,958	\$3,098	\$3,038	\$3,938	\$4,988	\$5,454	\$5,594	\$6,030	8%
Westfield	\$3,193	\$3,162	\$3,094	\$3,034	\$2,974	\$2,916	\$2,956	\$3,755	\$4,558	\$4,857	\$5,658	\$5,950	5%
Worcester	\$2,753	\$2,683	\$2,615	\$2,555	\$2,458	\$2,508	\$2,573	\$3,273	\$4,123	\$4,579	\$5,080	\$5,540	9%
Berkshire	\$2,550	\$2,700	\$2,640	\$2,580	\$2,520	\$2,490	\$2,700	\$3,090	\$3,390	\$3,390	\$3,600	\$3,675	2%
Bristol	\$2,460	\$2,460	\$2,340	\$2,220	\$2,070	\$2,070	\$2,160	\$2,820	\$3,060	\$3,240	\$3,750	\$3,750	0%
Bunker Hill	\$2,400	\$2,400	\$2,340	\$2,190	\$2,040	\$1,950	\$1,950	\$2,400	\$3,000	\$3,000	\$3,000	\$3,000	0%
Cape Cod	\$2,328	\$2,610	\$2,535	\$2,362	\$2,280	\$2,310	\$2,460	\$3,180	\$3,180	\$3,660	\$3,660	\$3,660	0%
Greenfield	\$2,458	\$2,462	\$2,387	\$2,327	\$2,237	\$2,297	\$2,507	\$3,017	\$3,317	\$3,647	\$3,982	\$4,098	3%
Holyoke	\$2,532	\$2,532	\$2,476	\$2,326	\$2,176	\$2,176	\$2,436	\$2,796	\$3,096	\$3,098	\$3,188	\$3,278	3%
Massachusetts Bay	\$2,490	\$2,370	\$2,250	\$2,205	\$2,010	\$1,890	\$1,960	\$2,870	\$3,170	\$3,650	\$3,650	\$3,650	0%
Massasoit	\$2,490	\$2,370	\$2,280	\$2,160	\$2,070	\$2,040	\$2,040	\$2,640	\$3,330	\$3,330	\$3,330	\$3,330	0%
Middlesex	\$2,820	\$2,750	\$2,630	\$2,450	\$2,360	\$2,360	\$2,510	\$3,020	\$3,380	\$3,650	\$3,650	\$3,740	2%
Mount Wachusett	\$3,150	\$3,060	\$2,950	\$2,800	\$2,660	\$2,570	\$2,690	\$3,410	\$4,010	\$4,010	\$3,970	\$4,120	4%
North Shore	\$2,490	\$2,490	\$2,400	\$2,220	\$2,130	\$2,190	\$2,490	\$3,090	\$3,390	\$3,390	\$3,480	\$3,480	0%
Northern Essex	\$2,430	\$2,550	\$2,445	\$2,310	\$2,220	\$2,190	\$2,280	\$2,670	\$2,970	\$2,970	\$3,150	\$3,150	0%
Quinsigamond	\$2,254	\$2,370	\$2,250	\$2,070	\$1,980	\$1,890	\$1,890	\$2,730	\$3,600	\$3,600	\$3,600	\$3,750	4%
Roxbury	\$2,400	\$2,400	\$2,280	\$2,190	\$2,070	\$2,100	\$2,100	\$2,450	\$3,250	\$3,460	\$3,460	\$3,460	0%
STCC	\$2,630	\$2,630	\$2,510	\$2,360	\$2,270	\$2,184	\$2,434	\$2,734	\$3,144	\$3,204	\$3,354	\$3,456	3%
Weighted Average UMass*	\$4,952	\$4,890	\$4,833	\$4,727	\$4,704	\$4,695	\$4,692	\$5,798	\$6,802	\$8,437	\$8,697	\$9,001	3%
Weighted Average State Colleges*	\$3,334	\$3,287	\$3,192	\$3,103	\$2,984	\$2,962	\$2,954	\$3,743	\$4,590	\$5,100	\$5,448	\$5,855	7%
Weighted Average State Colleges excludes MCA and MMA*	\$3,302	\$3,249	\$3,165	\$3,058	\$2,937	\$2,908	\$2,890	\$3,678	\$4,515	\$5,027	\$5,377	\$5,789	8%
Weighted Average Community Colleges*	\$2,524	\$2,530	\$2,433	\$2,297	\$2,183	\$2,153	\$2,273	\$2,831	\$3,265	\$3,380	\$3,477	\$3,526	1%
Weighted Average All Colleges and University*	\$3,586	\$3,571	\$3,447	\$3,337	\$3,257	\$3,229	\$3,264	\$4,041	\$4,753	\$5,457	\$5,670	\$5,915	4%
Weighted Average All Colleges and University excludes MCA and MMA*	\$3,593	\$3,568	\$3,478	\$3,331	\$3,252	\$3,220	\$3,254	\$4,031	\$4,739	\$5,447	\$5,658	\$5,901	4%

Source: Tuition and Fee Survey

*Weighted data calculated based on % Undergraduate FTE of total by Segment and overall. 2005/06 values are based on Fall-2004 FTE until updated FTE data is available

Note: Fees do not include scheduled increase of \$750 effective in spring 2004 per campus at the University of Massachusetts.

Community College 80% Draw Communities for Undergraduate Enrollment Fall 2001 - Fall 2005

BERKSHIRE COMMUNITY COLLEGE

Adams	Cheshire
Dalton	Great Barrington
Lee	Lenox
North Adams	Pittsfield

BRISTOL COMMUNITY COLLEGE

Acushnet	Dartmouth
Fairhaven	Fall River
New Bedford	Somerset
Swansea	Taunton
Westport	

BUNKER HILL COMMUNITY COLLEGE

Boston	Cambridge
Chelsea	Everett
Malden	Medford
Quincy	Revere
Somerville	

CAPE COD COMMUNITY COLLEGE

Barnstable	Bourne
Brewster	Dennis
Falmouth	Harwich
Mashpee	Plymouth
Sandwich	Yarmouth

GREENFIELD COMMUNITY COLLEGE

Amherst	Ashfield
Belchertown	Bernardston
Colrain	Conway
Deerfield	Easthampton
Erving	Greenfield
Hadley	Montague
Northampton	Northfield
Orange	Shelburne
Sunderland	

HOLYOKE COMMUNITY COLLEGE

Agawam	Amherst
Belchertown	Chicopee
Easthampton	Holyoke
Ludlow	Northampton
South Hadley	Southwick
Springfield	West Springfield
Westfield	

MASS BAY COMMUNITY COLLEGE

Ashland	Bellingham
Boston	Brookline
Cambridge	Dedham
Framingham	Franklin
Holliston	Hopkinton
Marlborough	Medfield
Medway	Milford
Millis	Natick
Needham	Newton
Norwood	Sudbury
Walpole	Waltham
Watertown	Wayland
Wellesley	Westwood
Worcester	

MASSASOIT COMMUNITY COLLEGE

Abington	Boston
Braintree	Bridgewater
Brockton	Canton
East Bridgewater	Easton
Hanover	Hanson
Holbrook	Mansfield
Marshfield	Middleboro
Norwood	Pembroke
Plymouth	Quincy
Randolph	Raynham
Rockland	Stoughton
Taunton	Weymouth
Whitman	

MIDDLESEX COMMUNITY COLLEGE

Acton	Arlington
Bedford	Billerica
Burlington	Chelmsford
Dracut	Lawrence
Lexington	Lowell
Medford	Methuen
Pepperell	Reading
Stoneham	Tewksbury
Tyngsboro	Waltham
Westford	Wilmington
Woburn	

MOUNT WACHUSETT COMMUNITY COLLEGE

Ashburnham	Athol
Ayer	Barre
Fitchburg	Gardner
Hubbardston	Leominster
Lunenburg	Orange
Shirley	Templeton
Townsend	Westminster
Winchendon	

NORTH SHORE COMMUNITY COLLEGE

Beverly	Boston
Danvers	Gloucester
Ipswich	Lynn
Lynnfield	Malden
Marblehead	Peabody
Revere	Rockport
Salem	Saugus
Swampscott	Wakefield
Winthrop	

NORTHERN ESSEX COMMUNITY COLLEGE

Amesbury	Andover
Haverhill	Lawrence
Methuen	Newburyport
North Andover	

QUINSIGAMOND COMMUNITY COLLEGE

Auburn	Charlton
Clinton	Dudley
Grafton	Holden
Hudson	Leicester
Marlborough	Millbury
Northborough	Northbridge
Oxford	Shrewsbury
Southbridge	Spencer
Sutton	Webster
Worcester	

ROXBURY COMMUNITY COLLEGE

Boston

SPRINGFIELD TECHNICAL COMMUNITY COLLEGE

Agawam	Chicopee
East Longmeadow	Holyoke
Ludlow	Springfield
West Springfield	Westfield
Wilbraham	

Regions of Massachusetts

(Massachusetts Department of Economic Development breakdown)

Berkshire Region:

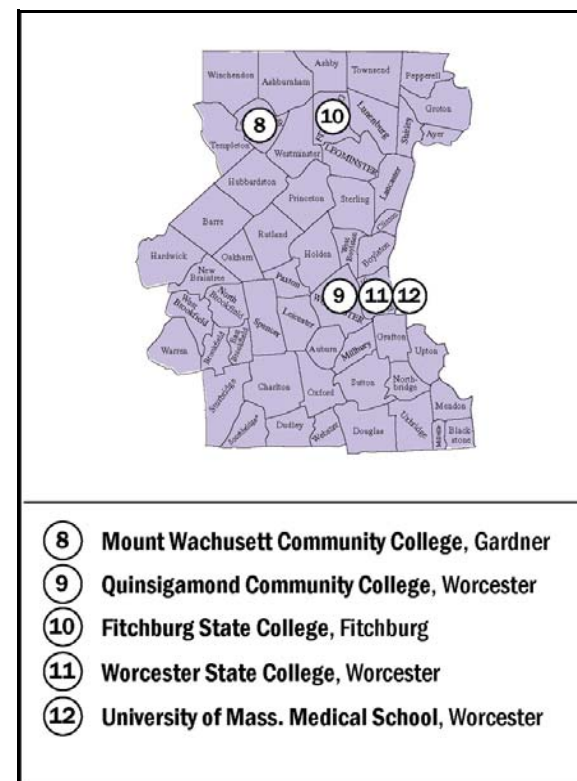
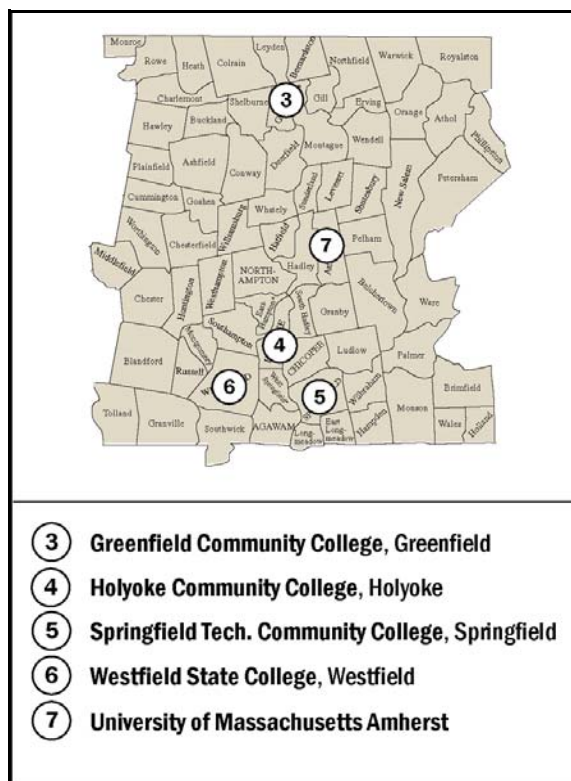
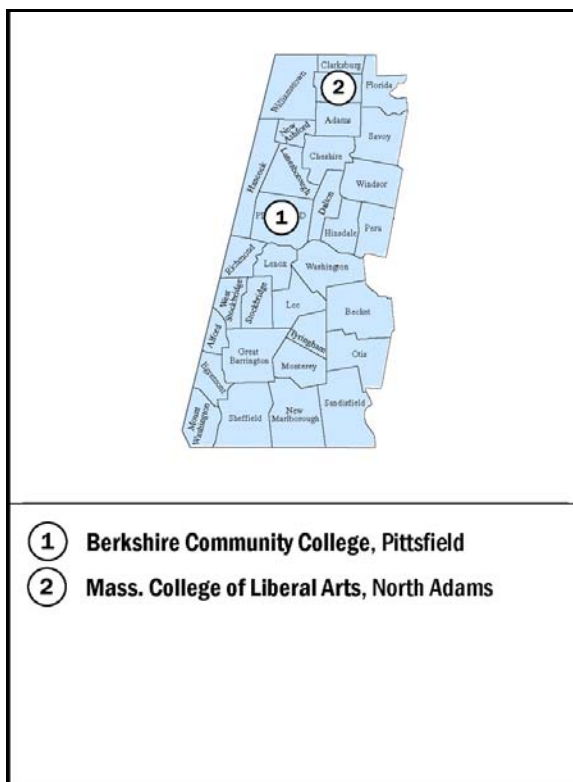
Massachusetts' western most region is defined by the 32 communities that constitute Berkshire County. Massachusetts College of Liberal Arts and Berkshire Community College are the two system institutions in the region.

Pioneer Valley Region:

Franklin, Hampden, and Hampshire Counties define the Pioneer Valley along with the Worcester County communities of Athol, Petersham, Phillipston, and Royalston. UMass-Amherst, Westfield State College, and Greenfield, Holyoke, and Springfield Technical Communities Colleges are located in this region.

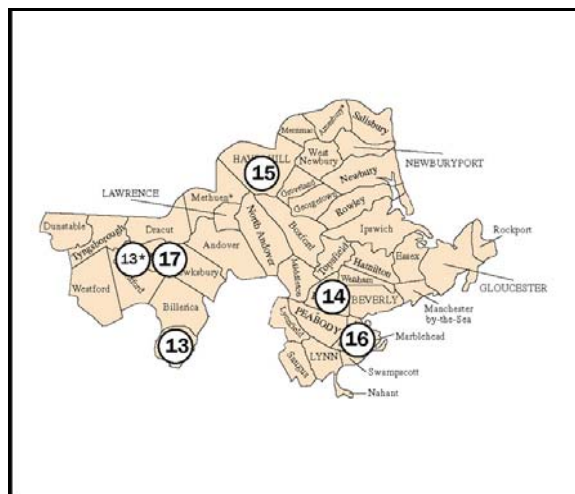
Central Region:

All but four of the 54 cities and towns in the Central Region are part of Worcester County (Ayer, Groton, Pepperell, Shirley, and Townsend are part of Middlesex County). Fitchburg and Worcester State Colleges, Quinsigamond and Mount Wachusett Community Colleges, and the UMass-Worcester Medical School are located in this region.



Northeast Region:

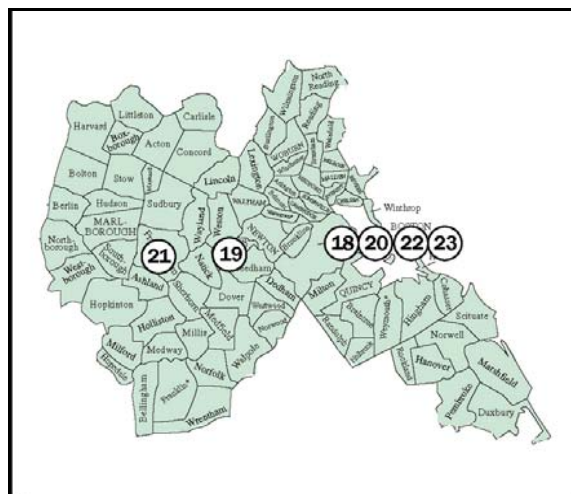
The Northeast contains all of Essex County and nine communities (Bedford, Billerica, Chelmsford, Dracut, Dunstable, Lowell, Tewksbury, Tyngsborough, and Westford) from the northern portion of Middlesex County. UMass-Lowell, Salem State College and Middlesex, North Shore, and Northern Essex Community Colleges are located in this region.



- ⑬ Middlesex Community College, Bedford, Lowell*
- ⑭ North Shore Community College, Danvers
- ⑮ Northern Essex Community College, Haverhill
- ⑯ Salem State College, Salem
- ⑰ University of Massachusetts Lowell

Greater Boston Region:

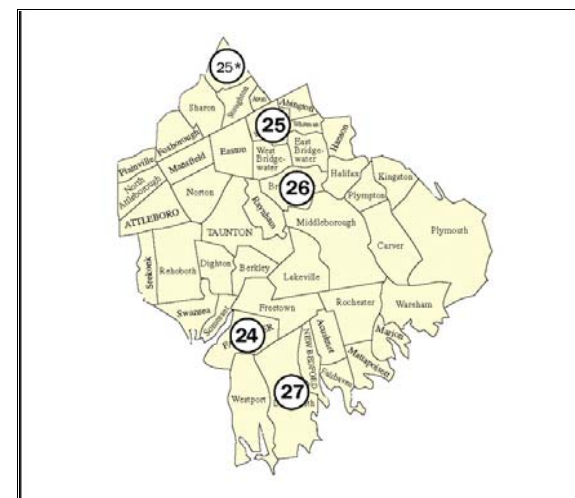
All of Suffolk, a majority of Middlesex and Norfolk, and communities from the eastern edge of Worcester and northern edge of Plymouth Counties make up Greater Boston. UMass-Boston, Framingham State College, MassArt, and Bunker Hill, Mass Bay, and Roxbury Community Colleges are located in this region.



- ⑱ Bunker Hill Community College, Boston
- ⑲ Mass. Bay Community College, Wellesley Hills
- ⑳ Roxbury Community College, Boston
- ㉑ Framingham State College, Framingham
- ㉒ Massachusetts College of Art, Boston
- ㉓ University of Massachusetts Boston

Southeast Region:

All of Bristol County and the southern portion of Plymouth County as well as the Norfolk County communities of Avon, Canton, Foxborough, Plainville, Sharon, and Stoughton constitute the Southeast Region. UMass-Dartmouth, Bridgewater State College, and Bristol and Massasoit Community Colleges are located in the Southeast Region.



- ㉔ Bristol Community College, Fall River
- ㉕ Massasoit Community College, Brockton, Canton*
- ㉖ Bridgewater State College, Bridgewater
- ㉗ University of Massachusetts Dartmouth

Cape and Islands Region:

The communities in Barnstable, Dukes, and Nantucket Counties comprise the Cape and Islands Region. The Massachusetts Maritime Academy and Cape Cod Community College are located in this region.

